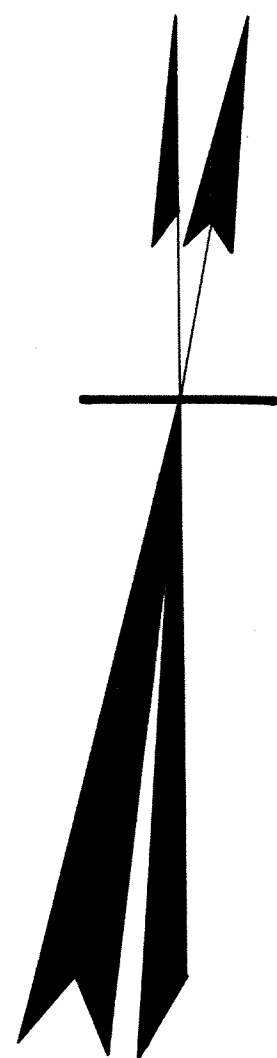
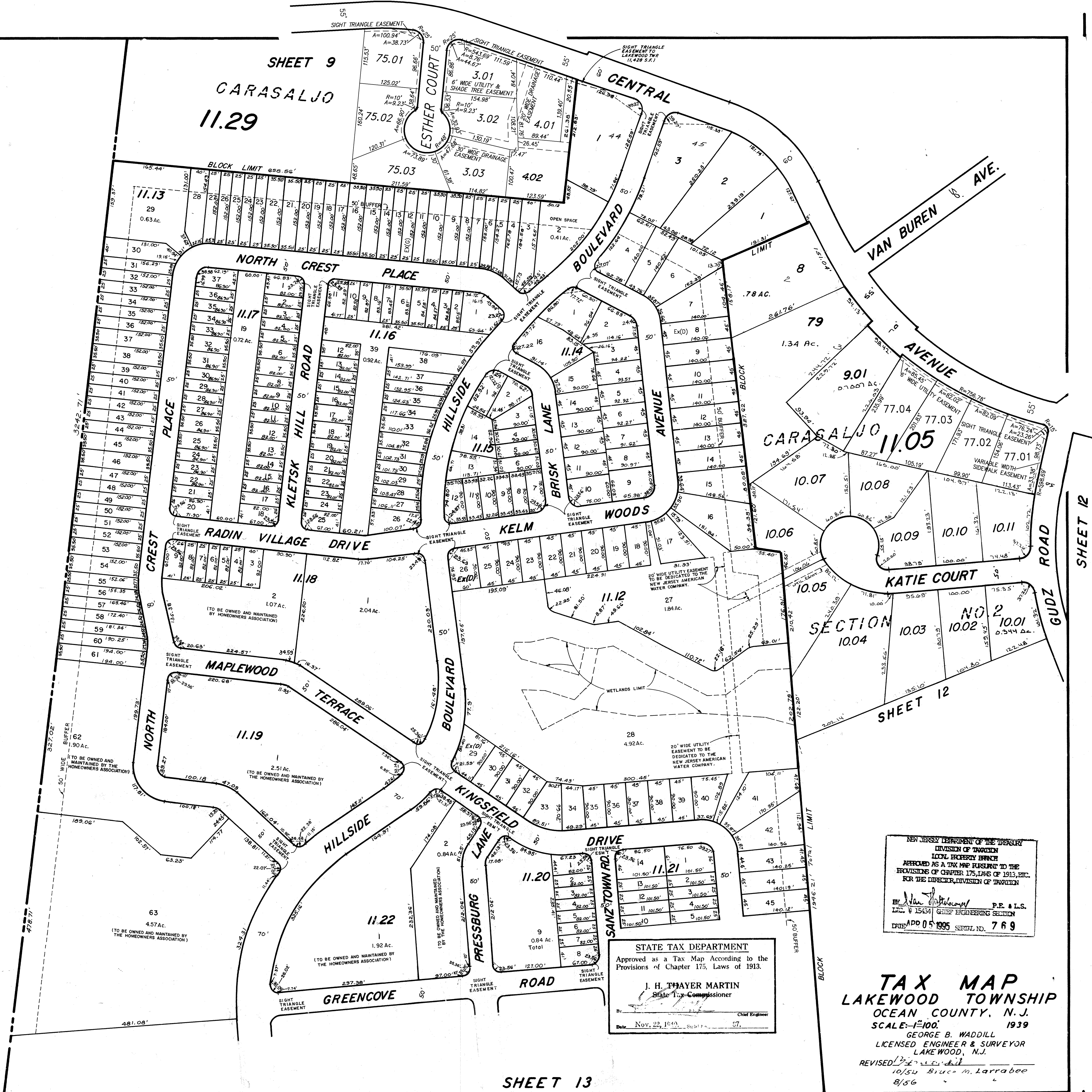


REVISIONS		
DATE	NAME	LIC. NO.
6-90	HARRY W. MAGER, JR.	L.S. 20810
3-92	HARRY W. MAGER, JR.	PL.S. 20810
9-92	HARRY W. MAGER, JR.	L.S. 20810
5-95	HARRY W. MAGER, JR.	L.S. 20810
4-96	HARRY W. MAGER, JR.	L.S. 20810
8-97	HARRY W. MAGER, JR.	L.S. 20810
12-99	BIRDSALL ENGINEERING, INC. HOWARD C. BIRDSALL	L.S. 19458
12-03	BIRDSALL ENGINEERING, INC. HOWARD C. BIRDSALL	L.S. 19458
11-05	BIRDSALL ENGINEERING, INC. WILLIAM SCHINDLER, JR., PLS	GS27188
1-06	BIRDSALL ENGINEERING, INC. WILLIAM SCHINDLER, JR., PLS	GS27188
11-06	BIRDSALL ENGINEERING, INC. HOWARD C. BIRDSALL, PLS	GS19458
3-07	BIRDSALL ENGINEERING, INC. HOWARD C. BIRDSALL, PLS	GS19458
5-2010	REMINGTON & VERNICK ENGINEERS CRAIG F. REMINGTON	23924
4-2011	REMINGTON & VERNICK ENGINEERS CRAIG F. REMINGTON	23924
7-2011	REMINGTON & VERNICK ENGINEERS CRAIG F. REMINGTON	23924
11-2012	REMINGTON & VERNICK ENGINEERS CRAIG F. REMINGTON	23924
11-2013	REMINGTON & VERNICK ENGINEERS CRAIG F. REMINGTON	23924



TOWNSHIP

JACKSON



STATE TAX DEPARTMENT
Approved as a Tax Map According to the
Provisions of Chapter 175, Laws of 1913.
J. H. THAYER MARTIN
State Tax Commissioner
By: _____ Chief Engineer
Date: Nov. 22, 1940

NEW JERSEY DEPARTMENT OF THE TREASURY
DIVISION OF TAXATION
LOCAL PROPERTY TAX
APPROVED AS A TAX MAP PURSUANT TO THE
PROVISIONS OF CHAPTER 175, LAWS OF 1913, ETC.
FOR THE DIRECTOR, DIVISION OF TAXATION
By: _____ P.E. & L.S.
L.S. # 15434 G.H.S. ENGINEERING SECTION
DATE: 05-1995 SERIAL NO. 769

TAX MAP
LAKEWOOD TOWNSHIP
OCEAN COUNTY, N.J.
SCALE: 1"=100' 1939
GEORGE B. WADDILL
LICENSED ENGINEER & SURVEYOR
LAKEWOOD, N.J.
REVISED: 10/50 Bruce M. Larrabee
8/56

SHEET 13
4-1-84 Rev for Revaluation - Daniel A. DeSessa P.E.-L.S.
8-85 UPDATE - HARRY W. MAGER, JR.-L.S.
4-88 Rev. for Revaluation - HARRY W. MAGER, JR.-L.S.