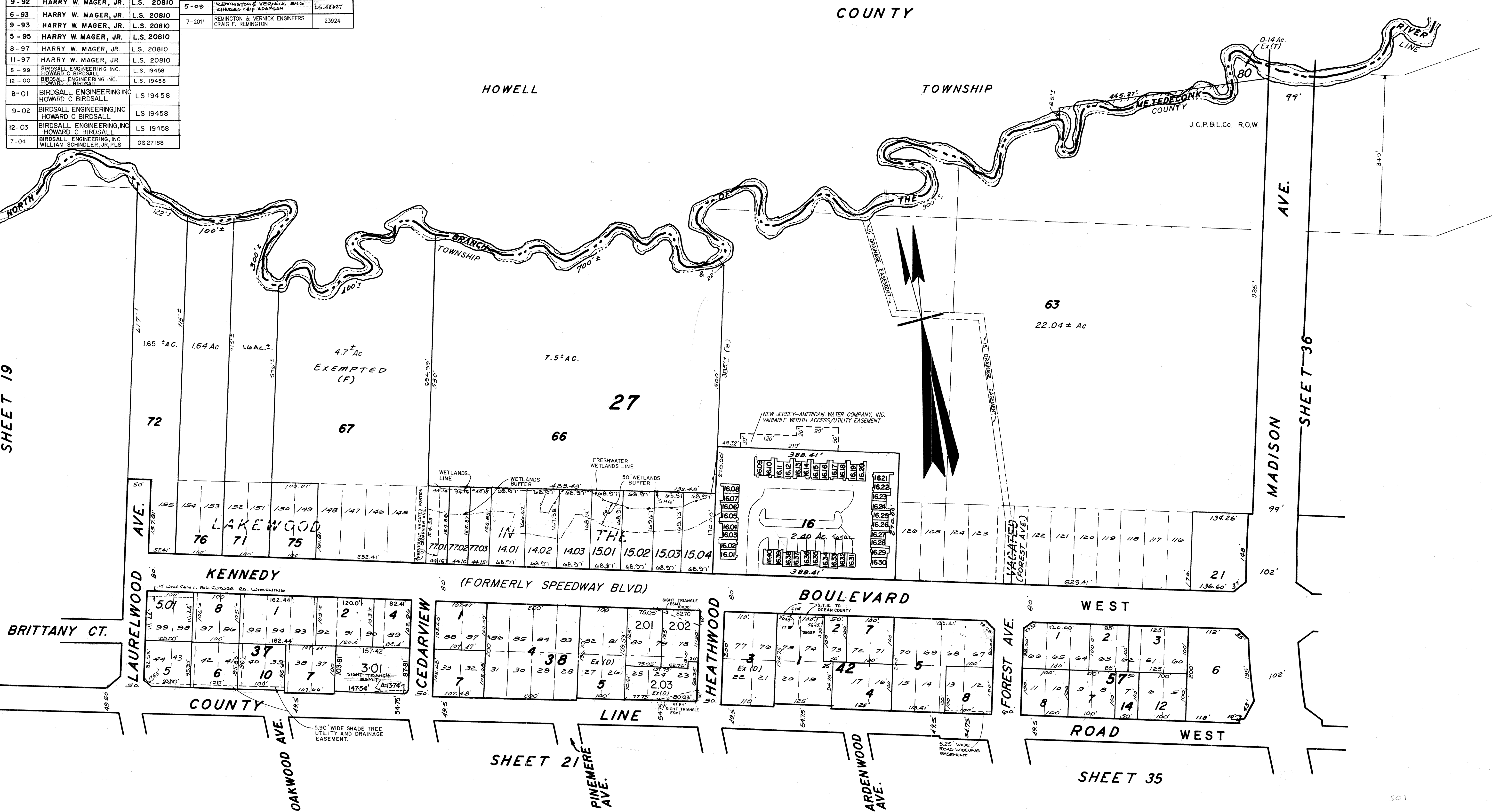


REVISIONS			REVISIONS		
DATE	NAME	LIC. NO.	DATE	NAME	LIC. NO.
7-91	HARRY W. MAGER, JR.	L.S. 20810	10-05	BIRDSALL ENGINEERING, INC. WILLIAM SCHINDLER, JR., PLS	GS27188
9-91	HARRY W. MAGER, JR.	L.S. 20810	11-06	BIRDSALL ENGINEERING, INC. HOWARD C. BIRDSALL, PLS	GS19458
3-92	HARRY W. MAGER, JR.	PLS. 20810	4-09	EDMUNTON & VERNICK ENG CHARLES CHAS ADAMSON	LS42627
9-92	HARRY W. MAGER, JR.	L.S. 20810	5-09	EDMUNTON & VERNICK ENG CHARLES CHAS ADAMSON	LS42627
6-93	HARRY W. MAGER, JR.	L.S. 20810	7-2011	EDMUNTON & VERNICK ENGINEERS ORANGE F. EDMUNTON	23924
9-93	HARRY W. MAGER, JR.	L.S. 20810			
5-95	HARRY W. MAGER, JR.	L.S. 20810			
8-97	HARRY W. MAGER, JR.	L.S. 20810			
11-97	HARRY W. MAGER, JR.	L.S. 20810			
8-99	BIRDSALL ENGINEERING INC. HOWARD C. BIRDSALL	L.S. 19458			
12-00	BIRDSALL ENGINEERING INC. HOWARD C. BIRDSALL	L.S. 19458			
8-01	BIRDSALL ENGINEERING INC. HOWARD C. BIRDSALL	LS 19458			
9-02	BIRDSALL ENGINEERING INC. HOWARD C. BIRDSALL	LS 19458			
12-03	BIRDSALL ENGINEERING INC. HOWARD C. BIRDSALL	LS 19458			
7-04	BIRDSALL ENGINEERING INC. WILLIAM SCHINDLER, JR., PLS	GS27188			



NEW JERSEY DEPARTMENT OF THE TREASURY  
DIVISION OF TAXATION  
LOCAL BUREAU BRANCH  
APPROVED AS A TAX MAP ACCORDING TO THE  
REVISIONS OF CHAPTER 175, LAWS OF 1913, ETC.  
FOR THE DIRECTOR, DIVISION OF TAXATION  
BY: [Signature] P.E. & L.S.  
DATE: APR 05 1999 SERIAL NO. 769

STATE TAX DEPARTMENT  
Approved as a Tax Map According to the  
Provisions of Chapter 175, Laws of 1913.  
J. H. THAYER MARTIN  
State Tax Commissioner  
By: [Signature] Chief Engineer  
Date: Nov. 22, 1940. Serial No. 87.

**TAX MAP**  
**LAKEWOOD TOWNSHIP**  
**OCEAN COUNTY, N. J.**  
SCALE: 1"=100'  
1939  
GEORGE B. WADDILL  
LICENSED ENGINEER & SURVEYOR  
LAKEWOOD, N.J.  
REVISED 12/83  
10/84 Bruce M. Larrabee  
8/86

6-82 Rev. For Revaluation - HARRY W. MAGER, JR. - L.S.  
7-85 UPDATE - HARRY W. MAGER, JR. - L.S.  
4-1-84 Rev. For Revaluation - Daniel A. DeSessa P.E. L.S.  
12-84 Update  
11-85  
12-87 UPDATE - HARRY W. MAGER, JR. - L.S.  
7-87  
12/87 Robert B. Powers  
4/88 Robert B. Powers  
10/83  
2/84