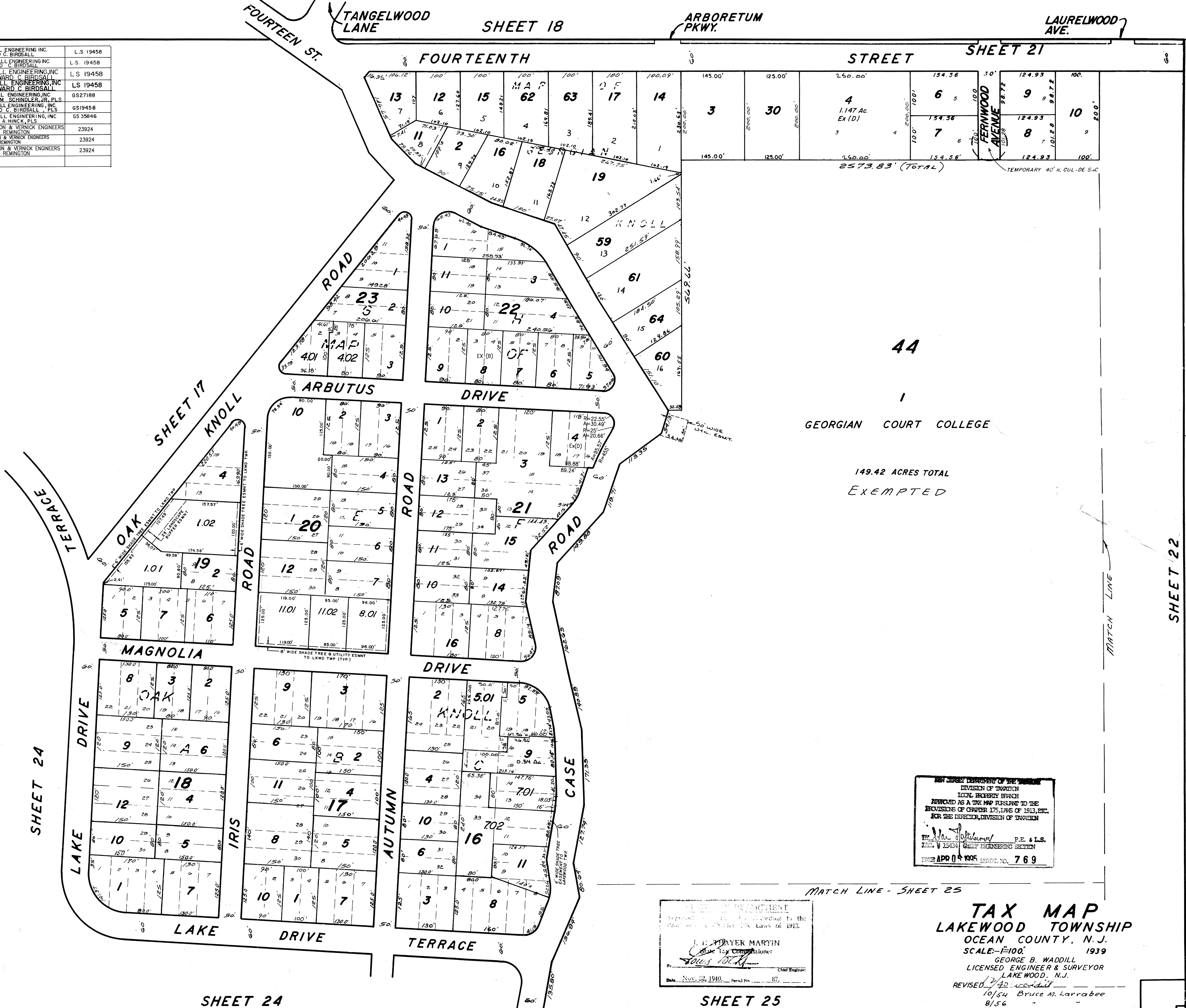
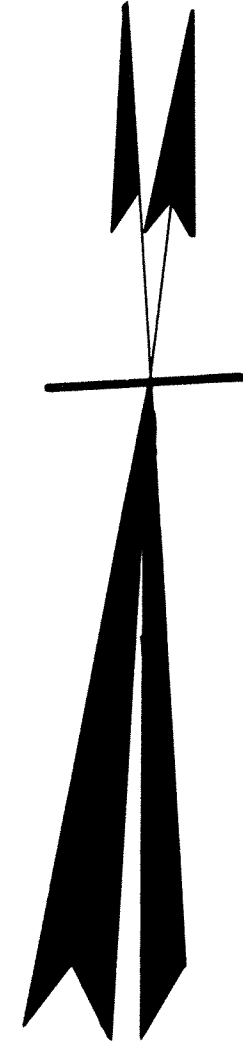


REVISIONS		
DATE	NAME	LIC. NO.
4-91	HARRY W. MAGER, JR.	L.S. 20810
3-92	HARRY W. MAGER, JR.	RLS. 20810
9-92	HARRY W. MAGER, JR.	L.S. 20810
1-95	HARRY W. MAGER, JR.	L.S. 20810
4-95	HARRY W. MAGER, JR.	L.S. 20810
6-95	HARRY W. MAGER, JR.	L.S. 20810
11-95	HARRY W. MAGER, JR.	L.S. 20810
4-96	HARRY W. MAGER, JR.	L.S. 20810
8-96	HARRY W. MAGER, JR.	L.S. 20810

11-99	BIRDALL ENGINEERING INC. HOWARD C. BIRDALL	L.S. 19458
12-00	BIRDALL ENGINEERING INC. HOWARD C. BIRDALL	L.S. 19458
10-02	BIRDALL ENGINEERING INC. HOWARD C. BIRDALL	L.S. 19458
12-03	BIRDALL ENGINEERING INC. HOWARD C. BIRDALL	L.S. 19458
7-04	BIRDALL ENGINEERING INC. WILLIAM SCHINDLER, JR. PLS	GS27188
8-07	BIRDALL ENGINEERING INC. HOWARD C. BIRDALL, PLS	GS19458
11-08	BIRDALL ENGINEERING INC. JOHN R. HINCK, PLS	GS 35846
11-09	REMINGTON & VERNICK ENGINEERS CRAIG F. REMINGTON	23924
4-2010	REMINGTON & VERNICK ENGINEERS CRAIG F. REMINGTON	23924
5-2010	REMINGTON & VERNICK ENGINEERS CRAIG F. REMINGTON	23924



NEW JERSEY DEPARTMENT OF TREASURY  
DIVISION OF TAXATION  
LOCAL PROPERTY TAX  
APPROVED AS A TAX MAP PURSUANT TO THE  
REVISIONS OF CHAPTER 175, LAWS OF 1913, ETC.  
FOR THE DIRECTOR, DIVISION OF TAXATION  
  
P.E. & L.S.  
11/15/2014  
DATE APR 04 2005  
SERIAL NO. 769

STATE OF NEW JERSEY  
COMMISSIONER OF TREASURY  
J. L. WADDER MARTIN  
Chief Tax Commissioner  
Date: Nov. 22, 1940. Period: Nov. 1939 - 1940.

**TAX MAP**  
**LAKEWOOD TOWNSHIP**  
**OCEAN COUNTY, N.J.**  
SCALE: 1"=100'  
1939  
GEORGE B. WADDILL  
LICENSED ENGINEER & SURVEYOR  
LAKEWOOD, N.J.  
REVISED 7/40  
10/54 Bruce M. Larrabee  
8/56