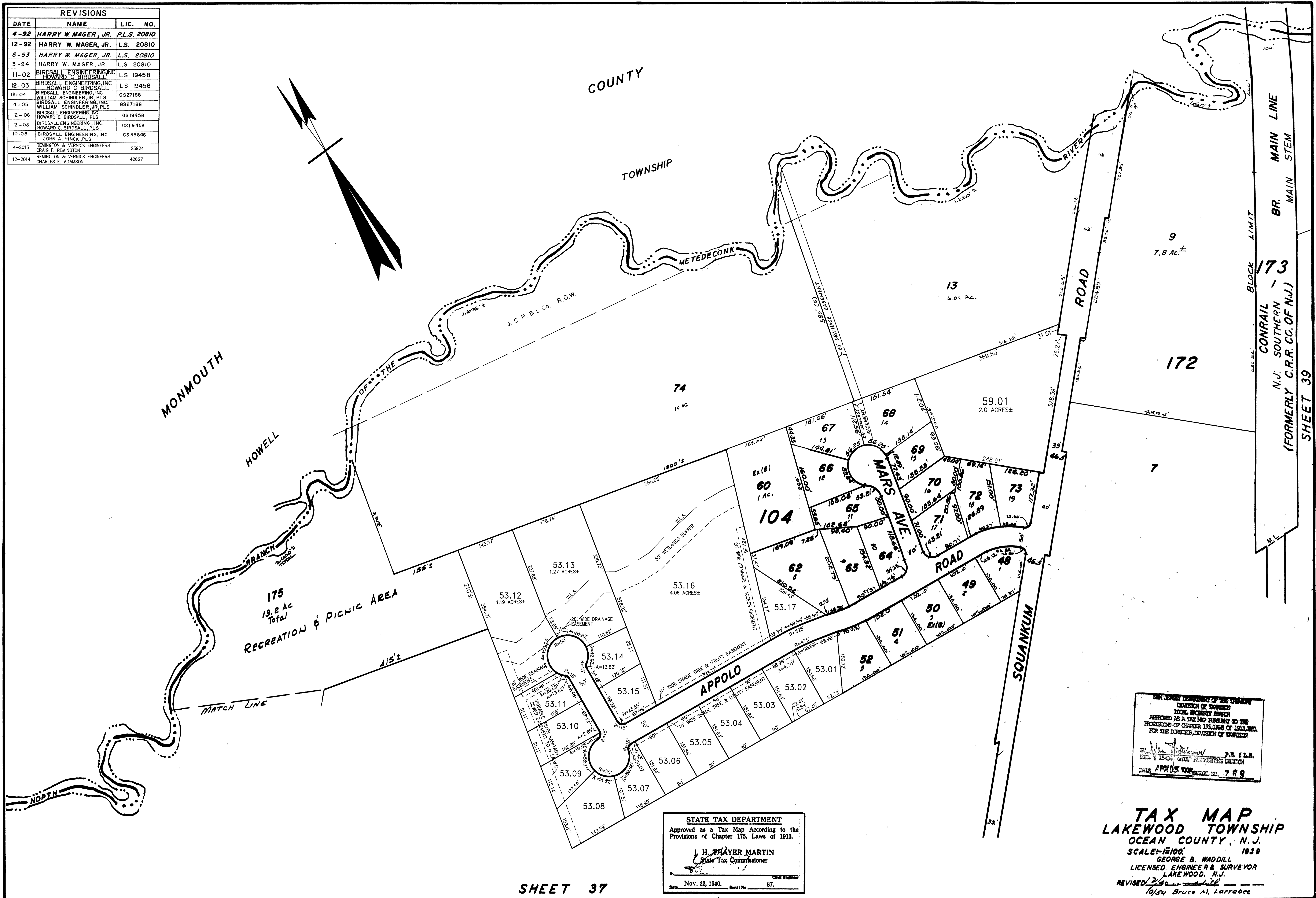


REVISIONS		
DATE	NAME	LIC. NO.
4-92	HARRY W. MAGER, JR.	P.L.S. 20810
12-92	HARRY W. MAGER, JR.	L.S. 20810
6-93	HARRY W. MAGER, JR.	L.S. 20810
3-94	HARRY W. MAGER, JR.	L.S. 20810
11-02	BIRDSALL ENGINEERING, INC. HOWARD C. BIRDSALL	LS 19458
12-03	BIRDSALL ENGINEERING, INC. HOWARD C. BIRDSALL	LS 19458
12-04	BIRDSALL ENGINEERING, INC. WILLIAM SCHINDLER, JR. PLS	GS27188
4-05	BIRDSALL ENGINEERING, INC. WILLIAM SCHINDLER, JR. PLS	GS27188
12-06	BIRDSALL ENGINEERING, INC. HOWARD C. BIRDSALL, PLS	GS19458
2-08	BIRDSALL ENGINEERING, INC. HOWARD C. BIRDSALL, PLS	GS19458
10-08	BIRDSALL ENGINEERING, INC. JOHN A. HINCK, PLS	GS35846
4-2013	REMINGTON & VERNICK ENGINEERS CRAIG F. REMINGTON	23924
12-2014	REMINGTON & VERNICK ENGINEERS CHARLES E. ADAMSON	42627



NEW JERSEY DEPARTMENT OF TREASURY
DIVISION OF TAXATION
LOCAL PROPERTY TAX
APPROVED AS A TAX MAP PURSUANT TO THE
PROVISIONS OF CHAPTER 175, LAWS OF 1913, ETC.
FOR THE DIRECTOR, DIVISION OF TAXATION
By: [Signature] P.E. & L.S.
DATE: APR 15 2014 CHIEF ENGINEERING DIVISION
SERIAL NO. 769

STATE TAX DEPARTMENT
Approved as a Tax Map According to the
Provisions of Chapter 175, Laws of 1913.
J. H. PRAYER MARTIN
State Tax Commissioner
By: [Signature] Chief Engineer
Date: Nov. 22, 1940. Serial No. 87.

TAX MAP
LAKEWOOD TOWNSHIP
OCEAN COUNTY, N.J.
SCALE 1"=100' 1939
GEORGE B. WADDILL
LICENSED ENGINEER & SURVEYOR
LAKEWOOD, N.J.
REVISED 2/84
19/54 Bruce M. Larrabee