

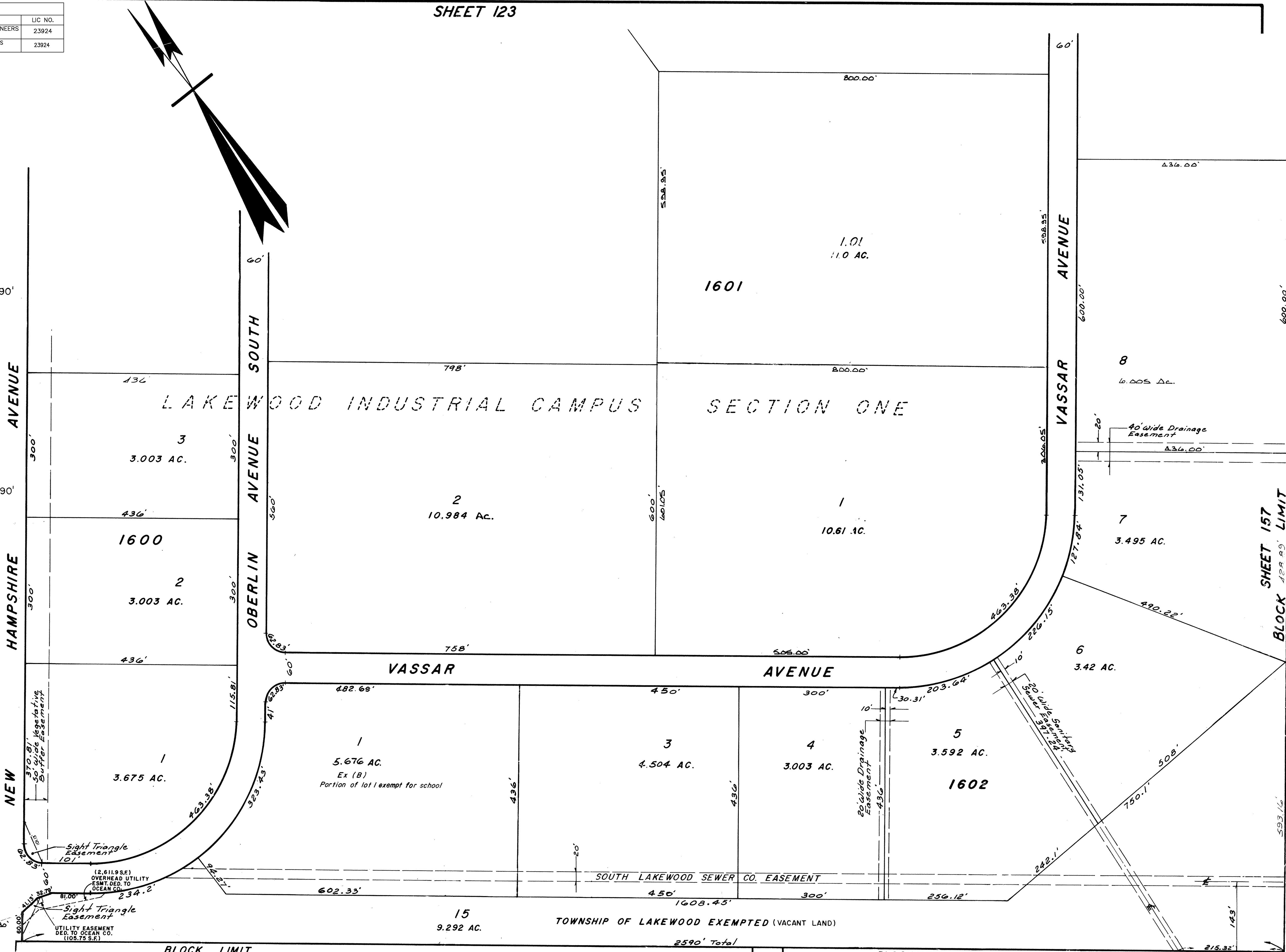
SHEET 123

REVISIONS			REVISIONS		
DATE	NAME	LIC. NO.	DATE	NAME	LIC. NO.
10-90	Harry W. Mager, Jr.	L.S. 20810	4-2010	REMINGTON & VERNICK ENGINEERS	23924
2-91	Harry W. Mager, Jr.	L.S. 20810		CRAIG F. REMINGTON	
11-91	Harry W. Mager, Jr.	L.S. 20810	4-2013	REMINGTON & VERNICK ENGINEERS	23924
4-92	HARRY W. MAGER, JR.	P.L.S. 20810		CRAIG F. REMINGTON	
1-93	HARRY W. MAGER, JR.	L.S. 20810			
7-94	HARRY W. MAGER, JR.	P.L.S. 20810			
12-99	BIRDSALL ENGINEERING, INC.	L.S. 19458			
9-00	BIRDSALL ENGINEERING, INC.	L.S. 19458			
12-01	BIRDSALL ENGINEERING, INC.	L.S. 19458			
10-02	BIRDSALL ENGINEERING, INC.	L.S. 19458			
12-03	BIRDSALL ENGINEERING, INC.	L.S. 19458			
11-05	BIRDSALL ENGINEERING, INC.	GS27188			
10-06	BIRDSALL ENGINEERING, INC.	GS 19458			
04-07	BIRDSALL ENGINEERING, INC.	GS19458			
9-2009	HARRY W. MAGER, JR.	P.L.S. 20810			

1,479.12' Total
2.01
36.40 Ac
Total
Ex(T)
236.28
241.28
431.85
TOTAL 10.69
MATCH LINE
CONSERVATION ESMT.
300.00' Total
56.43 Ac[±] Total
Ex(T)
470.00'

BOULEVARD OF THE AMERICAS
R=450'
A=353.33'
TOTAL
103
Ex(T)
170'
185'
190'
150'
2.06
5.35 ACRES[±]
130.00'
150'
170'
2.05
4.47 ACRES[±]
(TOTAL)
295.31' TOTAL
346' Total
20' WIDE GAS PIPELINE ESMT.
FOR THE BENEFIT OF LOT 2.03
7,687 SF
20' WIDE STORM DRAINAGE
ESMT FOR THE BENEFIT OF
LOTS 2.01 & 2.03
9,708 SF TOTAL
374'
60' WIDE ACCESS AND UTILITY
EASEMENT
60, 110 SF TOTAL
2.02
3.57 Ac. Total
BASIN No 5
2.03
387 Ac. Total
Ex(T)
346' Total
334'
OVERHEAD UTIL. ESMT.
TO OCEAN CO. (1,980.4 SF)
10' UTIL. ESMT.
TO O.C. CO.
(111,215 SF)

PINE STREET
SHEET 112



NEW JERSEY DEPARTMENT OF TREASURY
BUREAU OF TAXATION
TAX MAP
APPROVED AS A TAX MAP TO THE
PROVISIONS OF CHAPTER 175, LAWS OF 1913, ETC.
FOR THE DIRECTOR, DIVISION OF TAXATION
J. H. THAYER MARTIN
State Tax Commissioner
APR 05 1939
769

STATE TAX DEPARTMENT
Approved as a Tax Map According to the
Provisions of Chapter 175, Laws of 1913.
J. H. THAYER MARTIN
State Tax Commissioner
Nov. 22, 1940. Serial No. 87.

TAX MAP
LAKEWOOD TOWNSHIP
OCEAN COUNTY, N.J.
SCALE: 1"=100'
1939
GEORGE B. WADDILL
LICENSED ENGINEER & SURVEYOR
LAKEWOOD, N.J.
REVISED 10/54 Bruce M. Larrabee
9/56

SHEET 158

4-89 Rev. For Revaluation - HARRY W. MAGER, JR. - L.S.
8-84 Rev. for Revaluation
5-85 Update
11-88 UPDATE - HARRY W. MAGER, JR. - L.S.
5-89 UPDATE - HARRY W. MAGER, JR. - L.S.
12/87 Robert B. Powers
10/89 STANLEY B. PETERS
4/74 Daniel A. Desesja
8/75 " " "
6/81 " " "
9-83