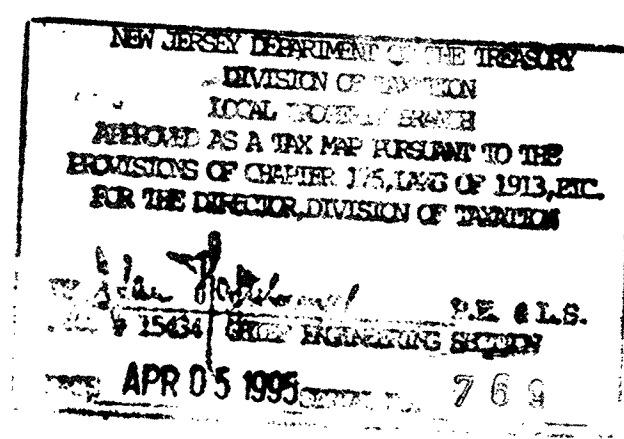
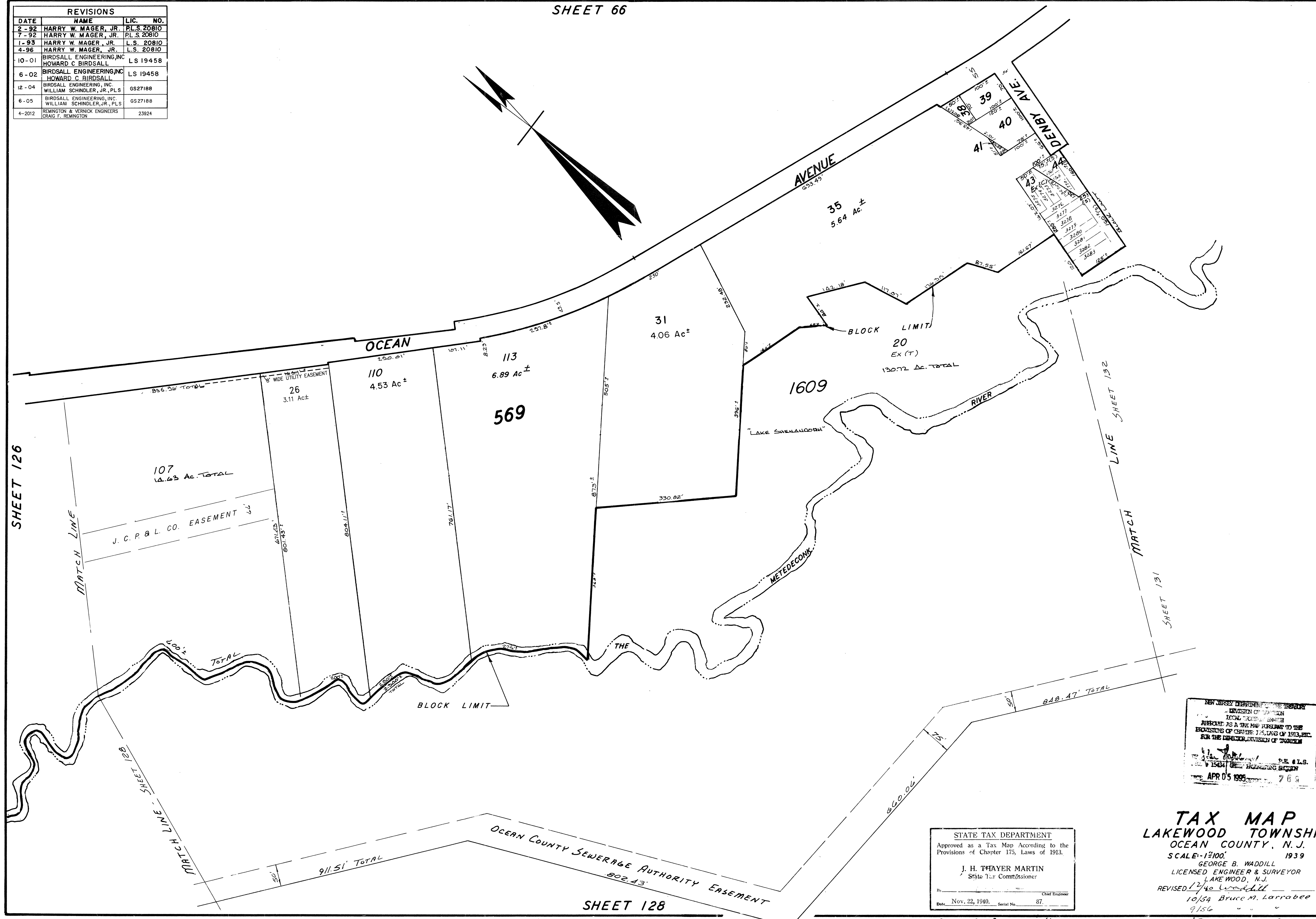


REVISIONS			
DATE	NAME	LIC.	NO.
2-92	HARRY W. MAGER, JR.	P.L.S.	20810
7-92	HARRY W. MAGER, JR.	P.L.S.	20810
1-93	HARRY W. MAGER, JR.	L.S.	20810
4-96	HARRY W. MAGER, JR.	L.S.	20810
10-01	BIRDSALL ENGINEERING, INC. HOWARD C. BIRDSALL	L.S.	19458
6-02	BIRDSALL ENGINEERING, INC. HOWARD C. BIRDSALL	L.S.	19458
12-04	BIRDSALL ENGINEERING, INC. WILLIAM SCHINDLER, JR., PLS	GS	27188
6-05	BIRDSALL ENGINEERING, INC. WILLIAM SCHINDLER, JR., PLS	GS	27188
4-2012	REMINGTON & VERNICK ENGINEERS CRAIG F. REMINGTON		23924



STATE TAX DEPARTMENT
Approved as a Tax Map According to the
Provisions of Chapter 173, Laws of 1913.

J. H. THAYER MARTIN
State Tax Commissioner

Date Nov. 22, 1940. Serial No. 87.

TAX MAP
LAKEWOOD TOWNSHIP
OCEAN COUNTY, N. J.
SCALE: 1"=100' 1939
GEORGE B. WADDILL
LICENSED ENGINEER & SURVEYOR
LAKEWOOD, N.J.
REVISED 12/40 Waddill
10/54 Bruce M. Larrabee
9/56 " " " " " "
9/59 " " " " " "
12/57 Robert B. Powers
3/68 Daniel A. DeSessa
10-81 STANLEY B. PETERS

9-1-84 Rev. for Revaluation
11-27-87 Update - HARRY W. MAGER, JR. - L.S.
6-28-88 Rev. for Revaluation - HARRY W. MAGER, JR. - L.S.