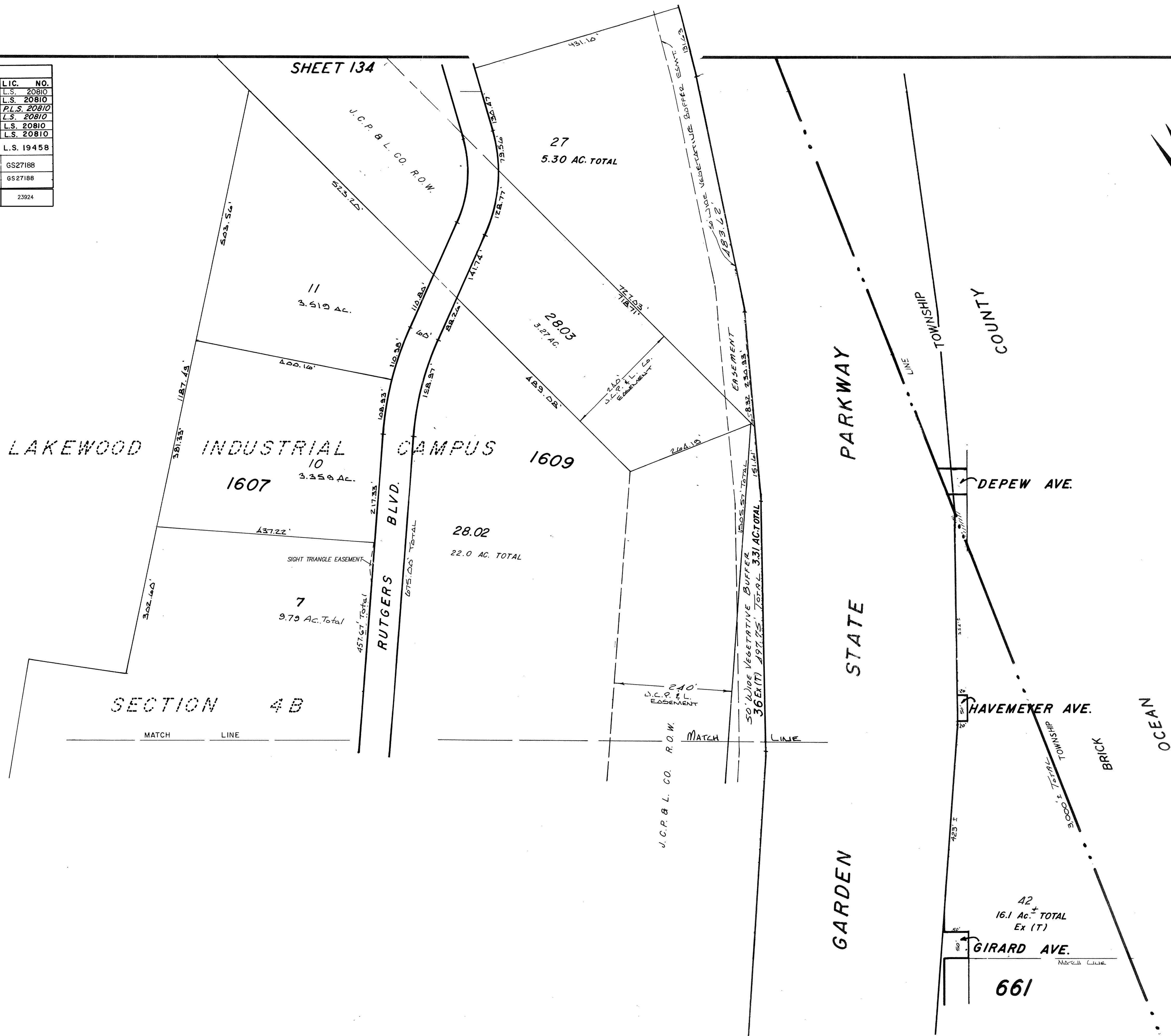


REVISIONS			
DATE	NAME	LIC.	NO.
6-90	Harry W. Mager, Jr.	L.S.	20810
7-91	HARRY W. MAGER, JR.	L.S.	20810
5-92	HARRY W. MAGER, JR.	P.L.S.	20810
9-93	HARRY W. MAGER, JR.	L.S.	20810
1-95	HARRY W. MAGER, JR.	L.S.	20810
4-95	HARRY W. MAGER, JR.	L.S.	20810
12-99	BIRDSALL ENG. INC. HOWARD C. BIRDSALL	L.S.	19458
11-04	BIRDSALL ENGINEERING, INC. WILLIAM SCHINDLER, JR., PLS	GS27188	
6-05	BIRDSALL ENGINEERING, INC. WILLIAM SCHINDLER, JR., PLS	GS27188	
2-2012	REMINGTON & VERNICK ENGINEERS CRAIG F. REMINGTON		23924

SHEET 131



SHEET 130

SHEET 136

TAX DEPARTMENT
Approved as a Tax Map According to the
Provisions of Chapter 175, Laws of 1913.
J. H. THAYER MARTIN
State Tax Commissioner
Date: Nov. 23, 1913. Serial No. 107.

NEW JERSEY DEPARTMENT OF TREASURY
DIVISION OF TAXATION
LOCAL BUREAU REPORT
APPROVED AS A TAX MAP BY THE
COMMISSIONER OF TAXATION, JUNE 1, 1913, P.L.
THE DIRECTOR, DIVISION OF TAXATION
APR 05 1995
769

TAX MAP
LAKEWOOD TOWNSHIP
OCEAN COUNTY, N.J.
SCALE: 1"=100' 1939
GEORGE B. WADDILL
LICENSED ENGINEER & SURVEYOR
LAKEWOOD, N.J.
REVISED 12/40 by Stanley B. Peters
11/54 Bruce M. Larrabee
9/56

7-83 UPDATE - HARRY W. MAGER, JR. - L.S.
1-90 UPDATE - HARRY W. MAGER, JR. - L.S. 20810

9-1-84 Rev. for Revaluation
12-87 UPDATE - HARRY W. MAGER, JR. - L.S.
11-88 UPDATE - HARRY W. MAGER, JR. - L.S.
7-89 REV. FOR REVALUATION - HARRY W. MAGER, JR. - L.S.

10/69 STANLEY B. PETERS
7/74 Daniel A. DeSessa
10/81 STANLEY B. PETERS