

REVISIONS			
DATE	NAME	LIC.	NO.
4-90	Harry W. Mager, Jr.	L.S.	20810
5-92	HARRY W. MAGER, JR.	PLS.	20810
7-92	HARRY W. MAGER, JR.	PLS.	20810
7-94	HARRY W. MAGER, JR.	L.S.	20810
12-00	BIRDALL ENGINEERING INC.	L.S.	19458
11-04	BIRDALL ENGINEERING INC.	GS27188	
11-05	BIRDALL ENGINEERING INC.	GS27188	
10-2014	REMINGTON & VERNICK ENGINEERS	42827	
	CHARLES E. ADAMSON		

SHEET 144

ROUTE NO.70

HIGHWAY

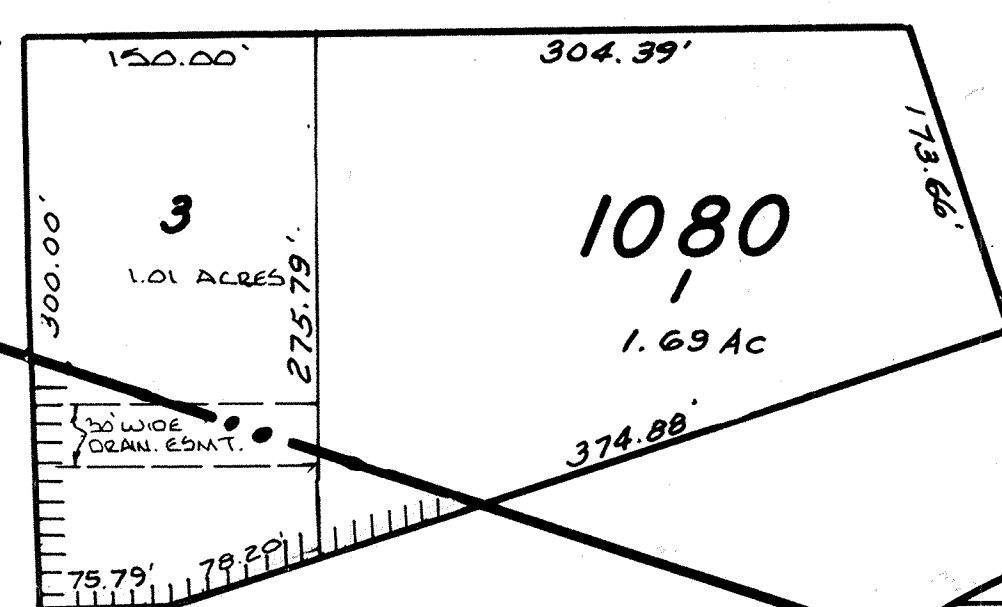
STREET

LOCUST

AVENUE

SHEET 93

RIVER



STATE

1081.01

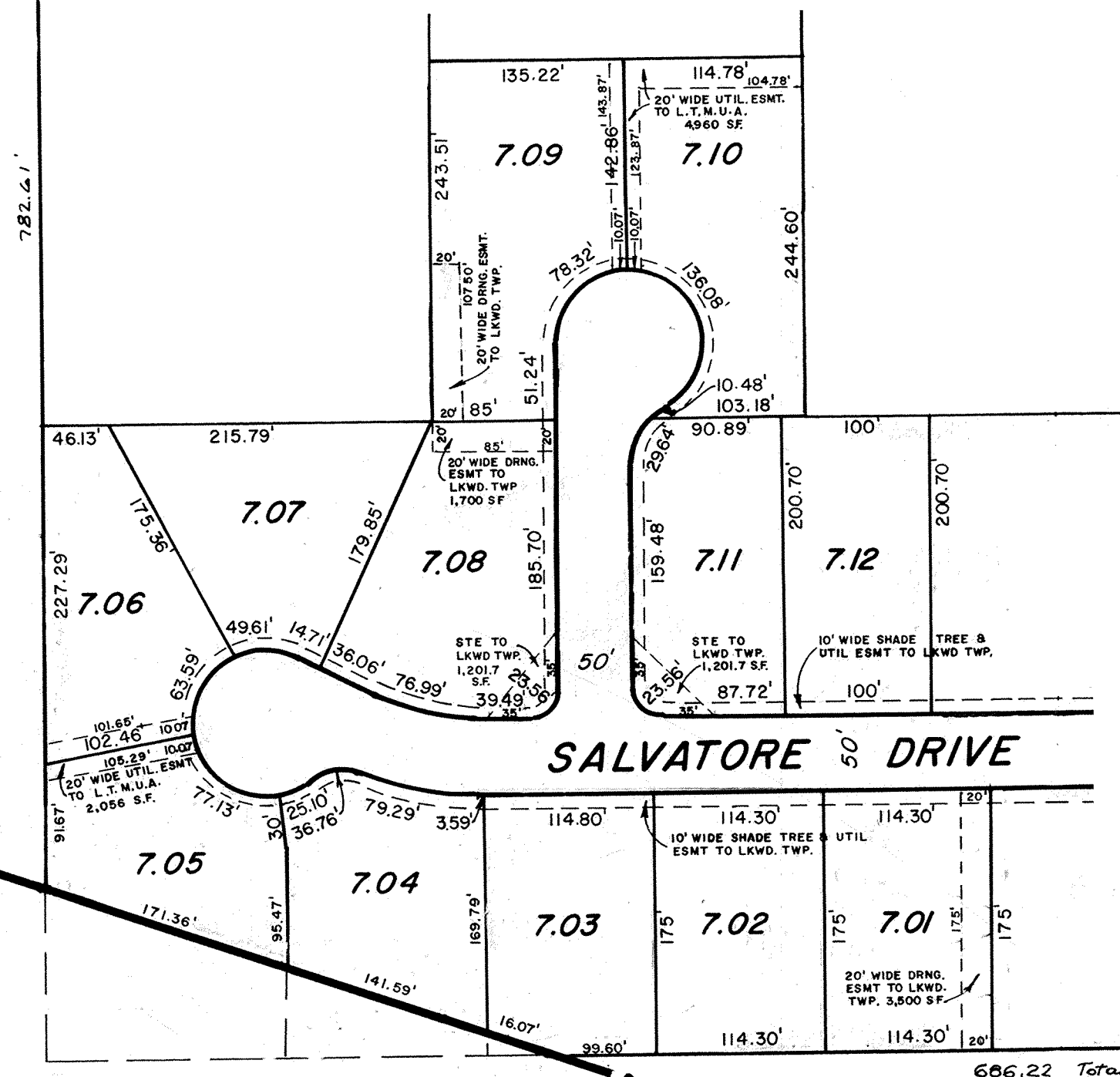
DOVER

STREET (NO NAME)

TOWNSHIP

LINE

SHEET 145.01



SHEET 146

SALVATORE DRIVE

NEW JERSEY DEPARTMENT OF TREASURY
DIVISION OF TAXATION
LOCAL RECEIPTS OFFICE
RECORDED AS A TAX MAP PURSUANT TO THE
PROVISIONS OF CHAPTER 175, LAWS OF 1913, ETC.
FOR THE DIVISION OF TAXATION
J. H. THAYER MARTIN
State Tax Commissioner
769

STATE TAX DEPARTMENT
Approved as a Tax Map According to the
Provisions of Chapter 175, Laws of 1913.
J. H. THAYER MARTIN
State Tax Commissioner
Date: Nov. 22, 1940. Serial No. 87.

TAX MAP
LAKEWOOD TOWNSHIP
OCEAN COUNTY, N.J.
SCALE: 1"=100' 1939
GEORGE B. WADDILL
LICENSED ENGINEER & SURVEYOR
LAKEWOOD, N.J.
REVISED 12/40 G. Waddill
10/54 Bruce M. Larrabee
10/69 STANLEY B. PETERS
11/73 Daniel A. De Sessa

9-1-84 Rev. for Revaluation
6-85 Update
7-85 Update - HARRY W. MAGER, JR., L.S.
7-85 Rev. for Revaluation - HARRY W. MAGER, JR., L.S.