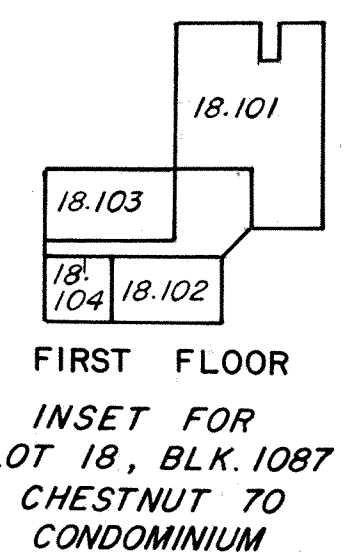
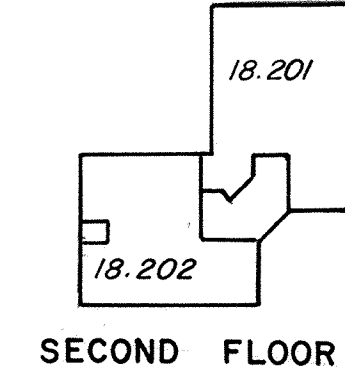


REVISIONS		
DATE	NAME	LIC. NO.
5-92	HARRY W. MAGER, JR.	PLS 20810
12-99	BIRDSALL ENGINEERING, INC.	L.S. 19458
5-00	BIRDSALL ENGINEERING, INC.	L.S. 19458
7-02	BIRDSALL ENGINEERING, INC.	L.S. 19458
12-04	BIRDSALL ENGINEERING, INC.	GS27188
10-05	BIRDSALL ENGINEERING, INC.	GS27188
5-06	BIRDSALL ENGINEERING, INC.	GS19458
5-2010	REMINGTON & VERNICK ENGINEERS	23924
5-2014	REMINGTON & VERNICK ENGINEERS	42627



STATE TAX DEPARTMENT  
Approved as a Tax Map According to the  
Provisions of Chapter 175, Laws of 1913.  
J. H. THAYER MARTIN  
State Tax Commissioner  
By: [Signature] Chief Engineer  
Date: Nov. 22, 1940. Serial No. 87.

NEW JERSEY DEPARTMENT OF TREASURY  
DIVISION OF TAXATION  
LOCAL EXERCISE BRANCH  
APPROVED AS A TAX MAP ACCORDING TO THE  
PROVISIONS OF CHAPTER 175, LAWS OF 1913, ETC.  
FOR THE DISTRICT, DIVISION OF TAXATION  
BY: [Signature] P.E. & L.S.  
LIC. # 10044 CHIEF ENGINEER SECTION  
APR 05 1995 769

TAX MAP  
LAKEWOOD TOWNSHIP  
OCEAN COUNTY, N.J.  
SCALE: 1"=100' 1939  
GEORGE B. WADDILL  
LICENSED ENGINEER & SURVEYOR  
LAKEWOOD, N.J.  
REVISED 12/40 Waddill  
10/54 Bruce M. Larabee  
10/54 Robert B. Powells

6-85 UPDATE - HARRY W. MAGER, JR. L.S. 1-84 Rev. for Revaluation  
7-85 REV. FOR REVALUATION - HARRY W. MAGER, JR. L.S. 7-85 Update  
12-87 UPDATE - HARRY W. MAGER, JR. L.S. 8-84  
11-88 UPDATE - HARRY W. MAGER, JR. L.S.  
1-89 UPDATE - HARRY W. MAGER, JR. L.S.  
10/69 STANLEY B. PETERS  
7/73 Daniel A. De Sessa