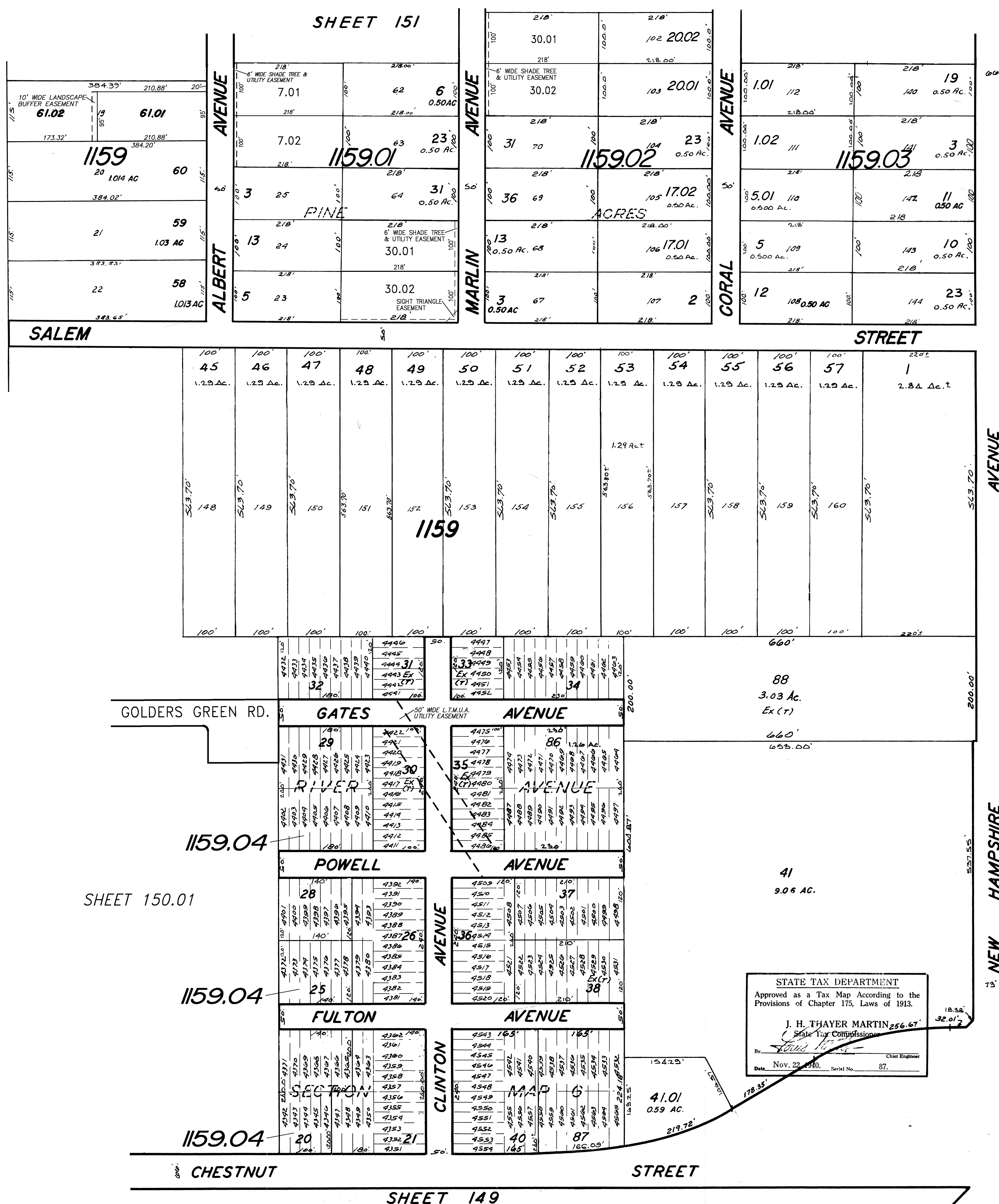


REVISIONS			
DATE	NAME	LIC.	NO.
6-90	Harry W. Mager, Jr.	L.S. 20810	
4-91	Harry W. Mager, Jr.	L.S. 20810	
7-91	Harry W. Mager, Jr.	L.S. 20810	
5-92	HARRY W. MAGER, JR.	P.L.S. 20810	
1-93	HARRY W. MAGER, JR.	P.L.S. 20810	
7-94	HARRY W. MAGER, JR.	P.L.S. 20810	
12-00	BIRDSALL ENGINEERING, INC. HOWARD C. BIRDSALL	L.S. 19458	
10/01	BIRDSALL ENGINEERING, INC. HOWARD C. BIRDSALL	L.S. 19458	
5-05	BIRDSALL ENGINEERING, INC. WILLIAM SCHINDLER, JR., PLS	GS 27188	
4-2010	REMINGTON & VERNICK ENGINEERS CRAIG F. REMINGTON	23924	
7-2011	REMINGTON & VERNICK ENGINEERS CRAIG F. REMINGTON	23924	
4-2013	REMINGTON & VERNICK ENGINEERS CRAIG F. REMINGTON	23924	
9-2013	REMINGTON & VERNICK ENGINEERS CRAIG F. REMINGTON	23924	
5-2014	REMINGTON & VERNICK ENGINEERS CHARLES E. ADAMSON	42627	

SHEET 139

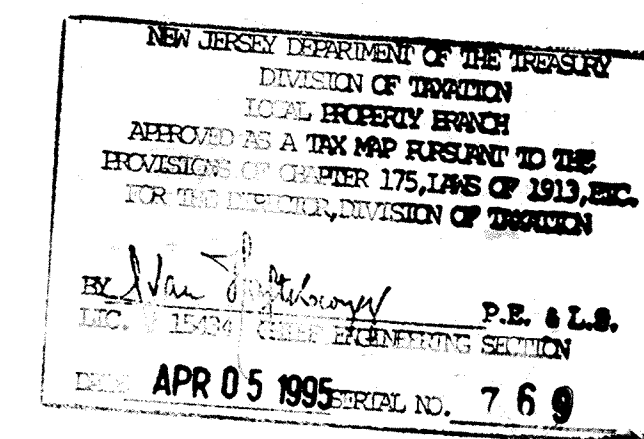


SHEET 165

AVENUE

NEW HAMPSHIRE

SHEET 167



TAX MAP
LAKEWOOD TOWNSHIP
OCEAN COUNTY N.J.
SCALE: 1"=100' 1939
GEORGE B. WADDILL
LICENSED ENGINEER & SURVEYOR
LAKEWOOD, N.J.
REVISED 1/40
10/54 Bruce M. Larrabee
3/75 Daniel A. DeSessa
7/81