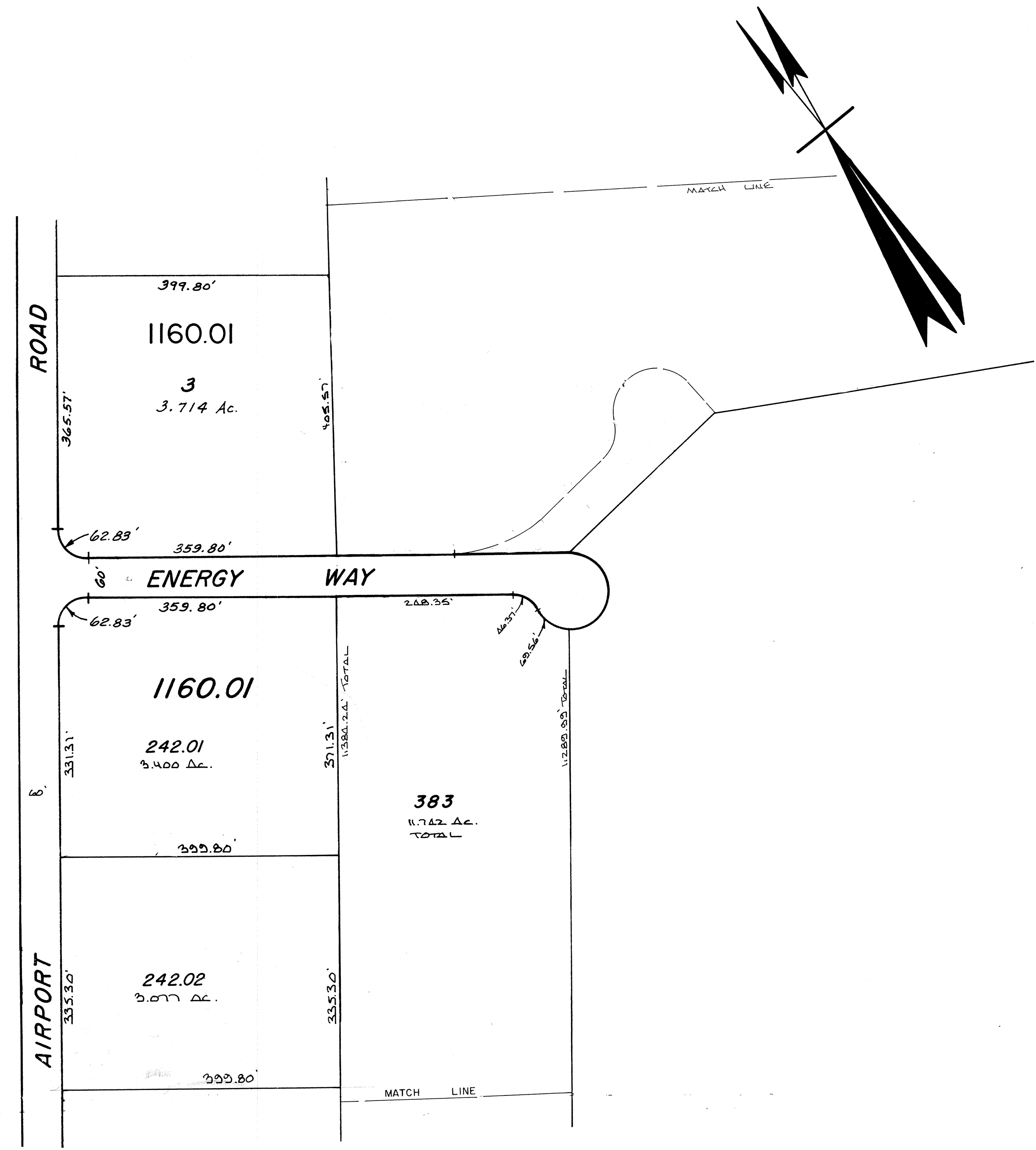


REVISIONS		
DATE	NAME	LIC. NO.
5-92	HARRY W. MAGER, JR.	P.L.S. 20810
6-92	HARRY W. MAGER, JR.	L.S. 20810
7-94	HARRY W. MAGER, JR.	P.L.S. 20810
11-97	HARRY W. MAGER, JR.	L.S. 20810
12-00	BIRDSALL ENGINEERING, INC.	L.S. 19458
7-02	BIRDSALL ENGINEERING, INC.	L.S. 19458
5-05	BIRDSALL ENGINEERING, INC.	GS27188
	HOWARD C. BIRDSALL	
	WILLIAM SCHINDLER, JR., PLS	

SHEET 157



SHEET 155

NEW JERSEY DEPARTMENT OF THE TREASURY  
DIVISION OF TAXATION  
LOCAL PROPERTY BRANCH  
APPROVED AS A TAX MAP PURSUANT TO THE  
PROVISIONS OF CHAPTER 175, LAWS OF 1913, ETC.  
FOR THE DIRECTOR, DIVISION OF TAXATION  
*[Signature]* P.E. & L.S.  
APR 05 1995 SERIAL NO. 769

STATE TAX DEPARTMENT  
Approved as a Tax Map According to the  
Provisions of Chapter 175, Laws of 1913.  
J. H. THAYER MARTIN  
State Tax Commissioner  
*[Signature]*  
Date Nov. 22, 1940. Serial No. 87.

TAX MAP  
LAKEWOOD TOWNSHIP  
OCEAN COUNTY, N.J.  
SCALE: 1"=100' 1939  
GEORGE B. WADDILL  
LICENSED ENGINEER & SURVEYOR  
LAKEWOOD, N.J.  
REVISED *[Signature]*

10-1-84 Rev. for Revaluation  
6-85 Update  
8-88 UPDATE - HARRY W. MAGER, JR.-L.S.

3-73 Daniel A. De Sessa  
10-81 STANLEY B. PETERS  
11-83 Daniel A. De Sessa.