

REVISIONS

DATE	NAME	LIC. NO.
8-90	HARRY W. MAGER, JR.	L.S. 20810
4-91	HARRY W. MAGER, JR.	L.S. 20810
9-92	HARRY W. MAGER, JR.	L.S. 20810
7-93	HARRY W. MAGER, JR.	L.S. 20810
8-96	HARRY W. MAGER, JR.	L.S. 20810
12-00	HARRY W. MAGER, JR.	L.S. 19458
12-01	HOWARD C. BIRDSONG	L.S. 19458
6-03	BIRDSONG ENGINEERING INC.	L.S. 19458
11-04	BIRDSONG ENGINEERING INC.	L.S. 19458
10-05	WILLIAM SCHINDLER, JR.	L.S. 19458

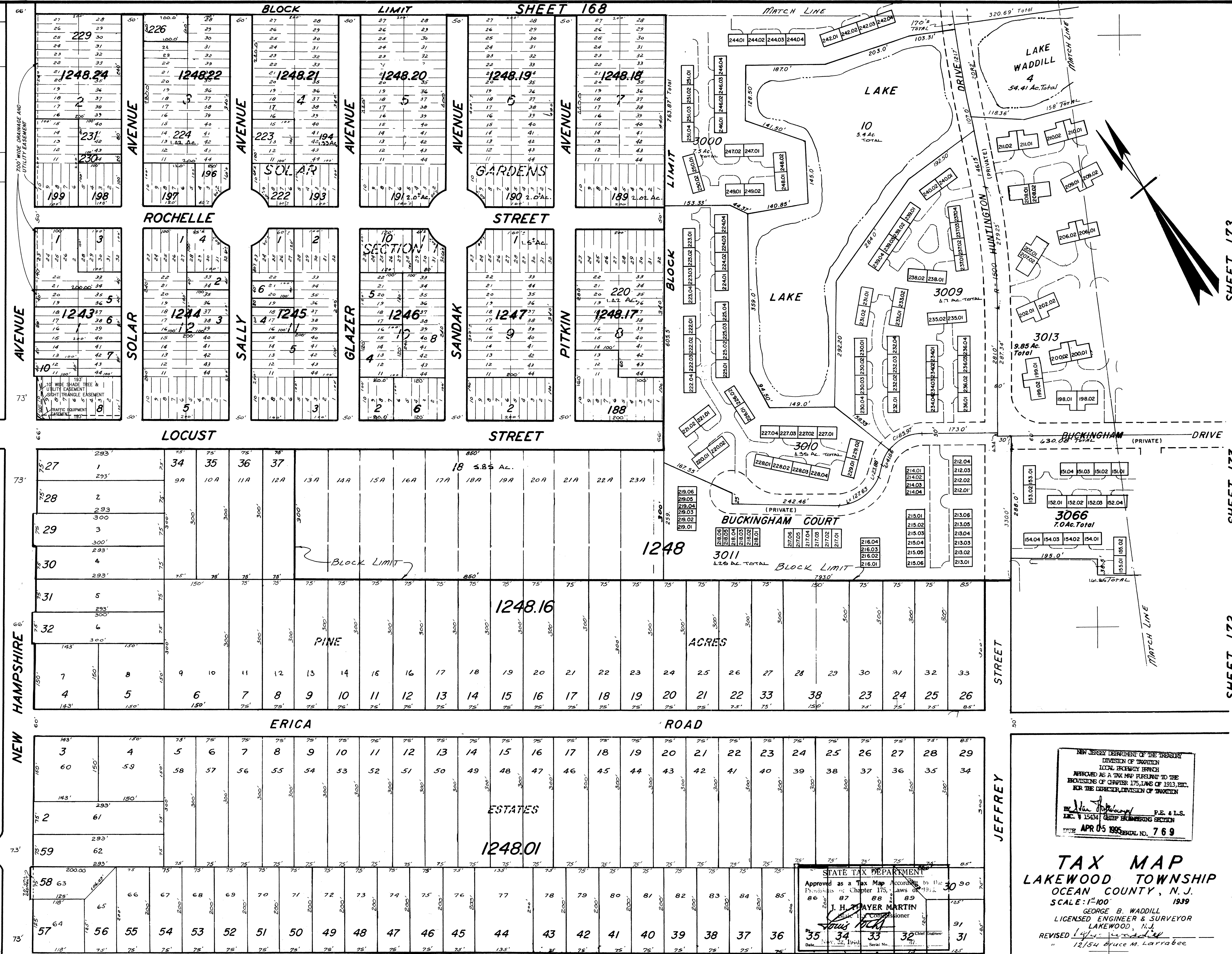
REVISIONS

DATE	NAME	LIC. NO.
4-2012	DAVID T. REMINGTON	23924
11-2013	DAVID T. REMINGTON	23924

SHEET 149

SHEET 148

BELGIAN HILL RD.



SHEET 173  
SHEET 172

NEW JERSEY DEPARTMENT OF THE TREASURY  
DIVISION OF TAXATION  
LOCAL PROPERTY TAX  
APPROVED AS A TAX MAP PURSUANT TO THE  
PROVISIONS OF CHAPTER 175, LAWS OF 1913, ETC.  
FOR THE DIRECTOR, DIVISION OF TAXATION

BY *John J. Martin* P.E. & L.S.  
DATE APR 05 1995  
SERIAL NO. 769

TAX MAP  
LAKEWOOD TOWNSHIP  
OCEAN COUNTY, N.J.  
SCALE: 1"=100'  
1939  
GEORGE B. WADDILL  
LICENSED ENGINEER & SURVEYOR  
LAKEWOOD, N.J.  
REVISED 12/15/44  
12/15/44 Bruce M. Larrabee

STATE TAX DEPARTMENT

Approved as a Tax Map According to the  
Provisions of Chapter 175, Laws of 1913,  
Etc.

J. H. PRAYER MARTIN  
Public Tax Commissioner

35 34 33 30 90  
31

COLLETON ST. SHEET 170

169