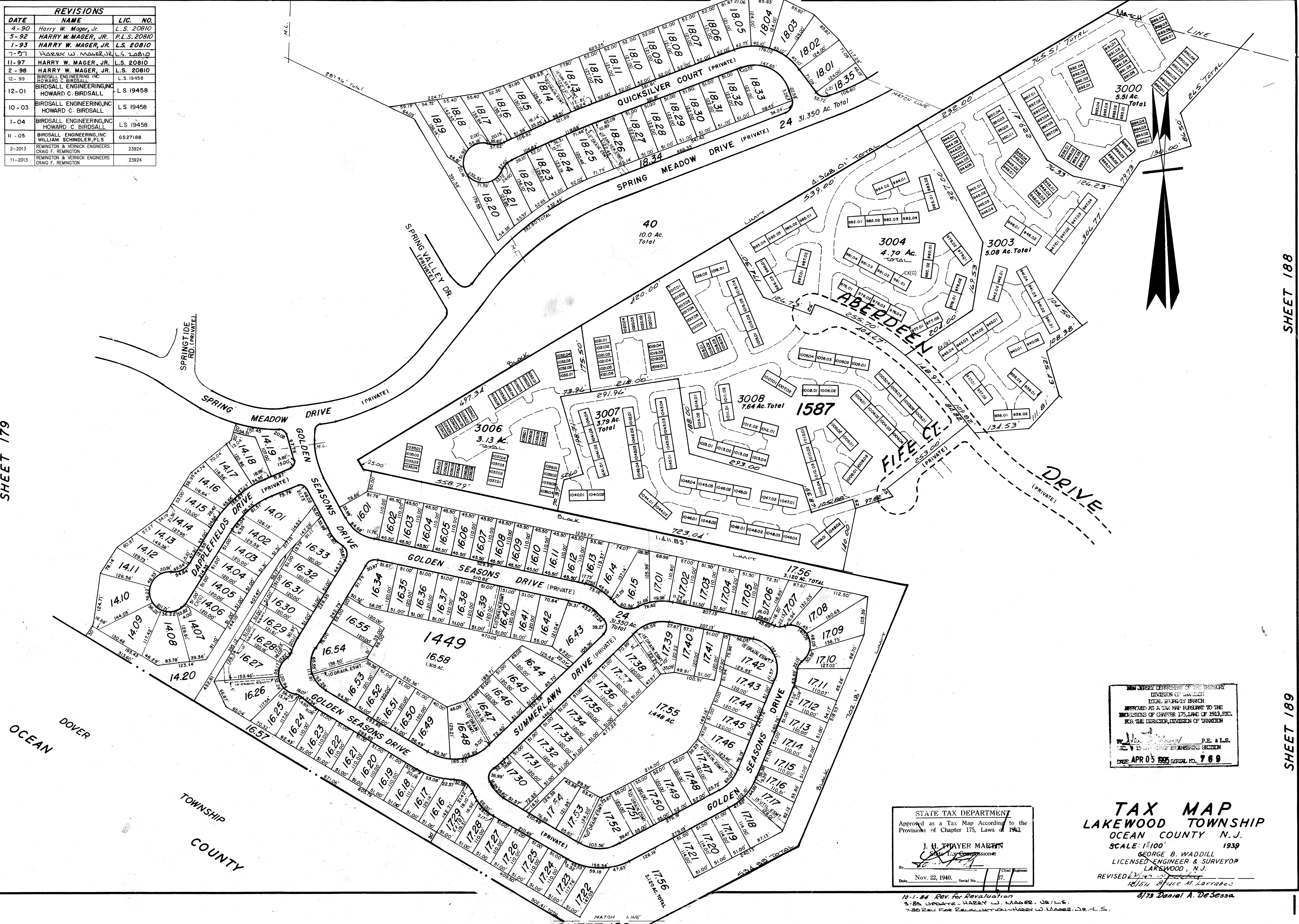


REVISIONS		
DATE	NAME	LIC. NO.
4-90	Harry W. Mager, Jr.	L.S. 20810
5-92	HARRY W. MAGER, JR.	P.L.S. 20810
1-93	HARRY W. MAGER, JR.	L.S. 20810
7-97	HARRY W. MAGER, JR.	L.S. 20810
11-97	HARRY W. MAGER, JR.	L.S. 20810
2-98	HARRY W. MAGER, JR.	L.S. 20810
12-99	BIRDSALL ENGINEERING, INC. HOWARD C. BIRDSALL	L.S. 19458
12-01	BIRDSALL ENGINEERING, INC. HOWARD C. BIRDSALL	L.S. 19458
10-03	BIRDSALL ENGINEERING, INC. HOWARD C. BIRDSALL	L.S. 19458
1-04	BIRDSALL ENGINEERING, INC. HOWARD C. BIRDSALL	L.S. 19458
11-05	BIRDSALL ENGINEERING, INC. WILLIAM SCHINDLER, P.L.S.	GS27188
2-2013	REMINGTON & VERNICK ENGINEERS CRAIG F. REMINGTON	23924
11-2013	REMINGTON & VERNICK ENGINEERS CRAIG F. REMINGTON	23924



NEW JERSEY DEPARTMENT OF TREASURY
DIVISION OF TAXATION
LOCAL BUREAU OF TAXATION
APPROVED AS A TAX MAP PURSUANT TO THE
PROVISIONS OF CHAPTER 175, LAWS OF 1913, ETC.
FOR THE DIRECTOR, DIVISION OF TAXATION
[Signature] P.E. & L.S.
J. H. THAYER MARSH
DATE: APR 05 2005 SERIAL NO. 769

STATE TAX DEPARTMENT
Approved as a Tax Map According to the
Provisions of Chapter 175, Laws of 1913
J. H. THAYER MARSH
State Tax Commissioner
By: *[Signature]* Chief Engineer
Date: Nov. 22, 1940. Serial No. 57.

TAX MAP
LAKEWOOD TOWNSHIP
OCEAN COUNTY N.J.
SCALE: 1"=100'
1939
GEO. B. WADDILL
LICENSED ENGINEER & SURVEYOR
LAKEWOOD, N.J.
REVISED 11-11-12
11/15/14 Bruce M. Lorrance
8/13 Daniel A. DeSessa

10-1-84 Rev. for Revaluation
3-8-84 Update - HARRY W. MAGER, JR. - L.S.
7-8-84 Rev. for Revaluation - HARRY W. MAGER, JR. - L.S.