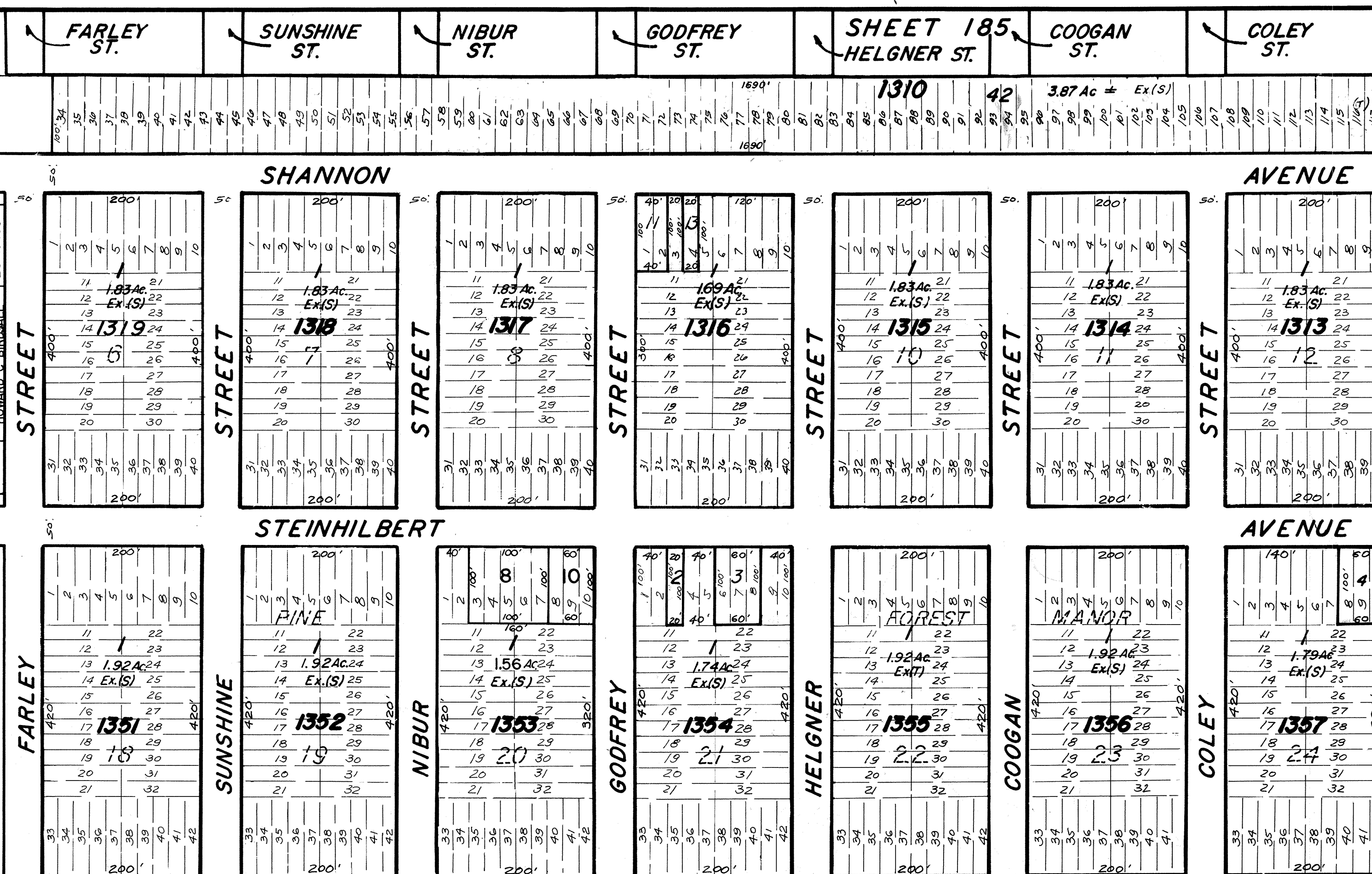


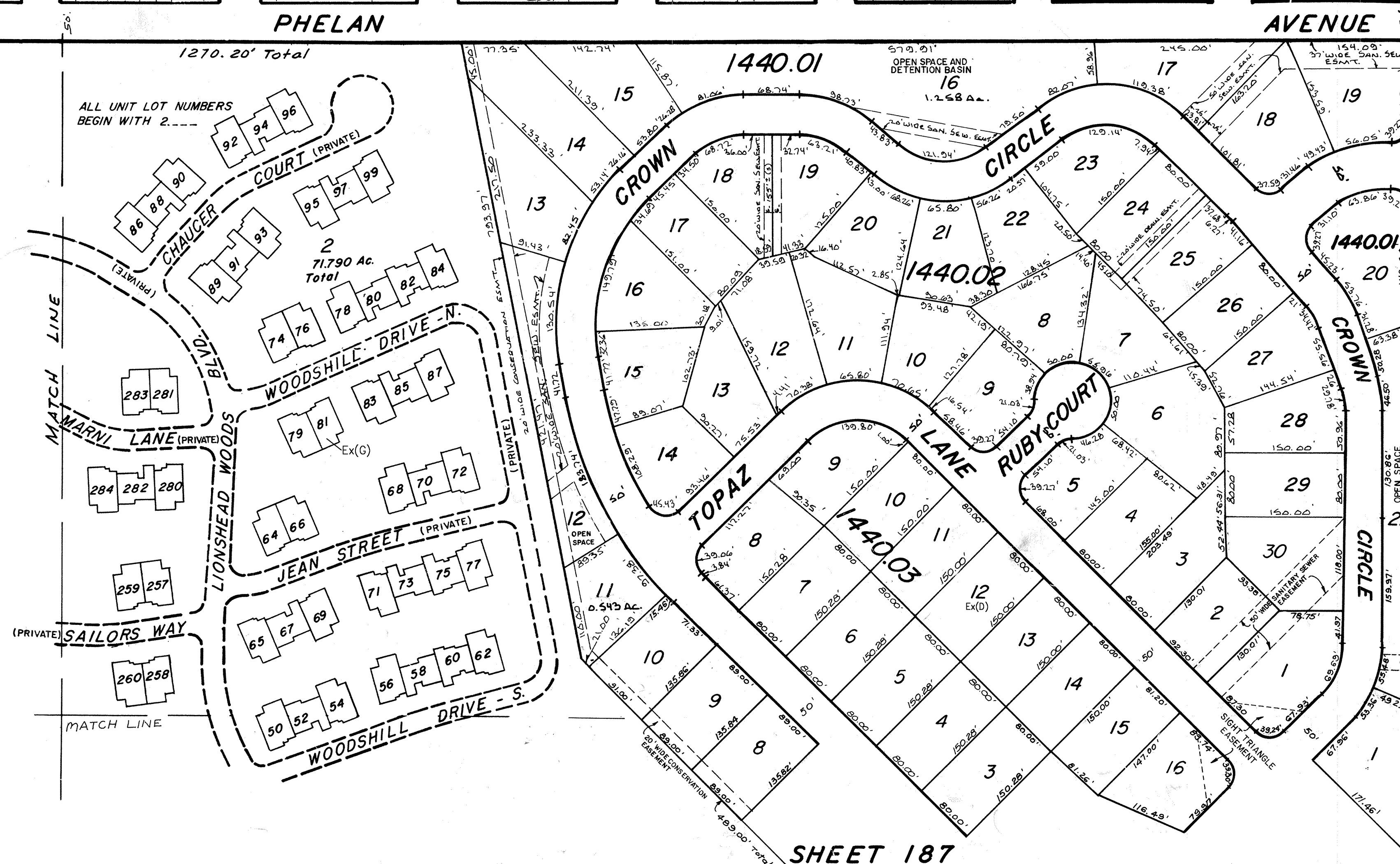
SHEET 183

DATE	NAME	LIC. NO.
11-05	BIRDALE ENGINEERING INC	6827188
12-06	BIRDALE ENGINEERING INC	6827188
8-07	BIRDALE ENGINEERING INC	6819458
5-2010	REMINION & VERNICK ENGINEERS	23924
11-2010	CRAIG F. REMINGTON	23924

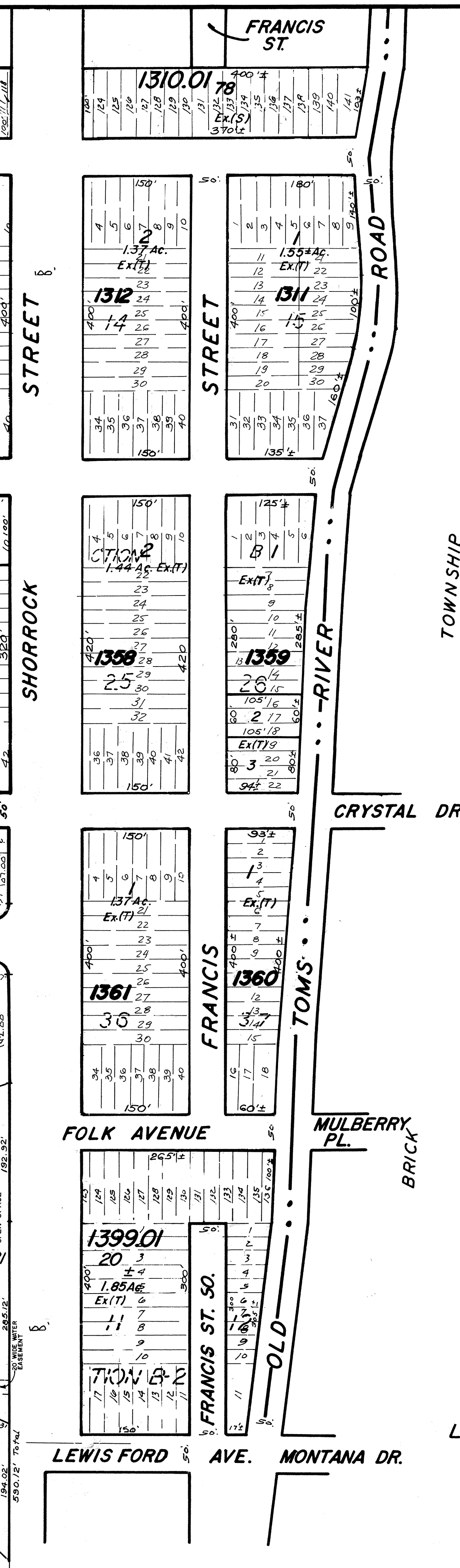
DATE	NAME	LIC. NO.
9-90	HARRY W. MAGER, JR.	L.S. 20810
6-91	HARRY W. MAGER, JR.	L.S. 20810
5-92	HARRY W. MAGER, JR.	L.S. 20810
11-96	HARRY W. MAGER, JR.	L.S. 20810
7-97	HARRY W. MAGER, JR.	L.S. 20810
12-99	HARRY W. MAGER, JR.	L.S. 19458
12-00	HARRY W. MAGER, JR.	L.S. 19458
9-02	BIRDALE ENGINEERING INC	L.S. 19458
12-03	BIRDALE ENGINEERING INC	L.S. 19458
1-04	BIRDALE ENGINEERING INC	L.S. 19458



SHEET 182



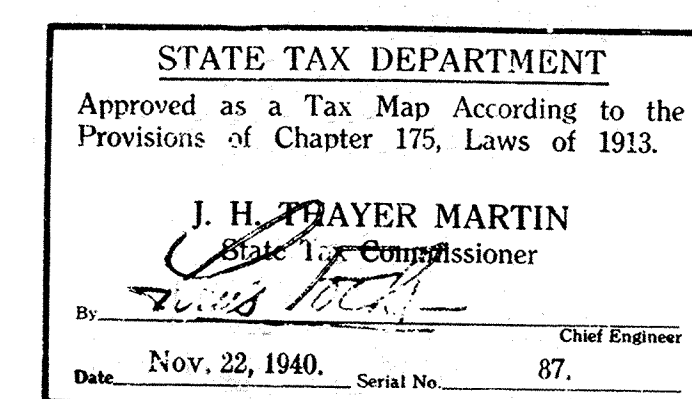
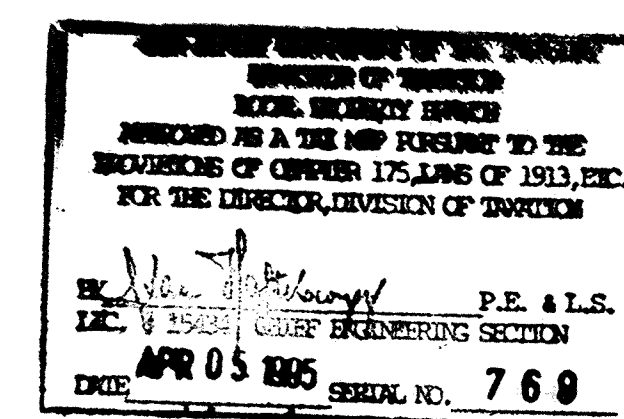
SHEET 187



TOWNSHIP

COUNTY

OCEAN



TAX MAP
LAKEWOOD TOWNSHIP
 OCEAN COUNTY, N. J.
 SCALE: 1"=100'
 1939

GEORGE B. WADDILL
 LICENSED ENGINEER & SURVEYOR
 LAKEWOOD, N. J.
 REVISED 12/40 Waddill

156 Bruce M. Larrabee
 7/73 Daniel A. De Sessa
 7/74

1-85 UPDATE - HARRY W. MAGER, JR. - L.S.

10-1-84 Rev for Revaluation

11-85 Update

3-86 Update

7-88 Update - HARRY W. MAGER, JR. - L.S.

3/75

8/78