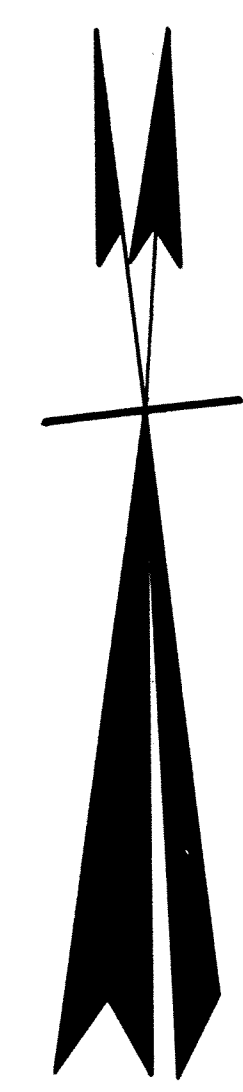
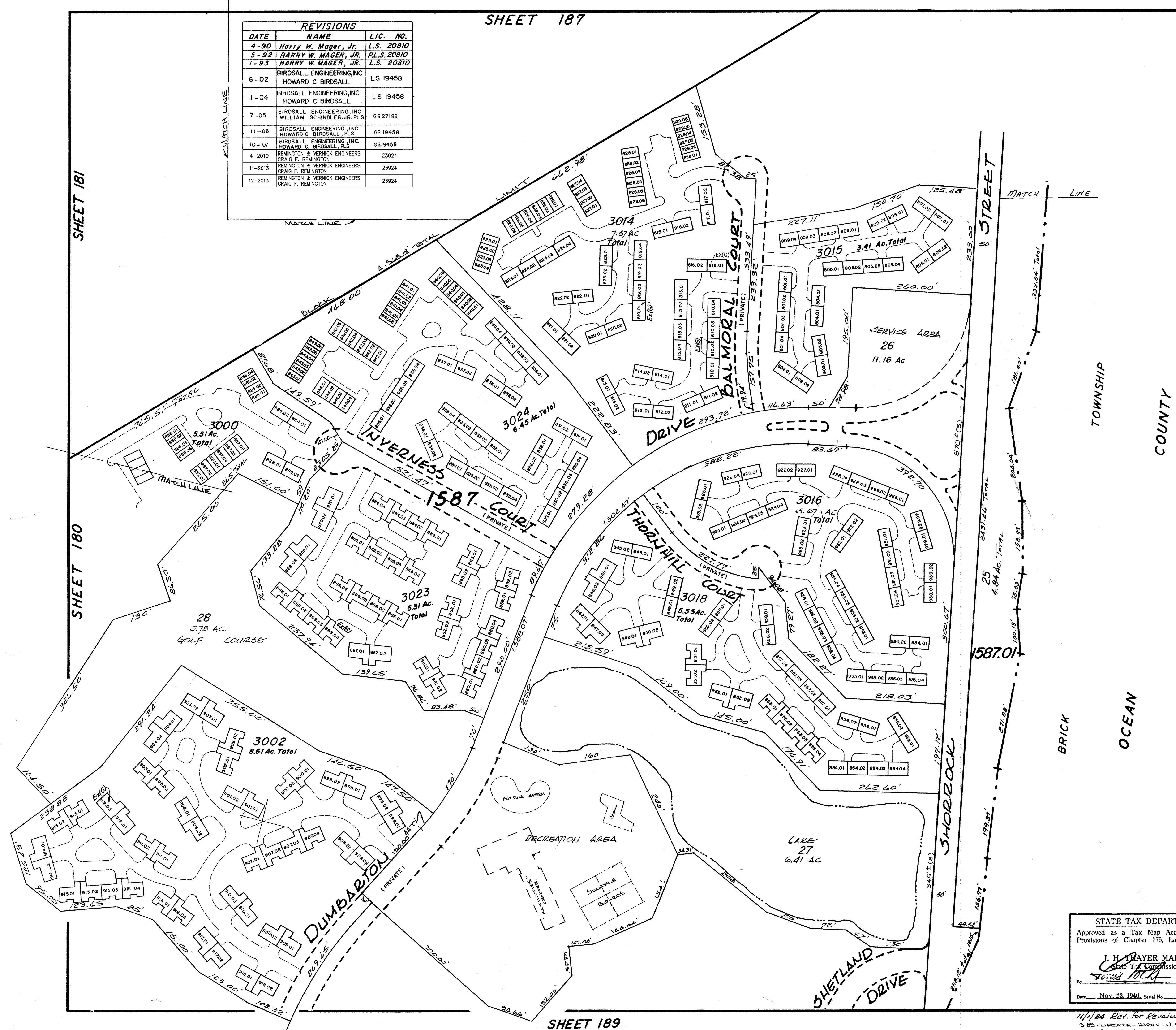


REVISIONS		
DATE	NAME	LIC. NO.
4-90	Harry W. Mager, Jr.	L.S. 20810
5-92	HARRY W. MAGER, JR.	PLS. 20810
1-93	HARRY W. MAGER, JR.	L.S. 20810
6-02	BIRDSALL ENGINEERING, INC. HOWARD C. BIRDSALL	LS 19458
1-04	BIRDSALL ENGINEERING, INC. HOWARD C. BIRDSALL	LS 19458
7-05	BIRDSALL ENGINEERING, INC. WILLIAM SCHINDLER, JR., PLS.	GS 27188
11-06	BIRDSALL ENGINEERING, INC. HOWARD C. BIRDSALL, PLS.	GS 19458
10-07	BIRDSALL ENGINEERING, INC. HOWARD C. BIRDSALL, PLS.	GS 19458
4-2010	REMINGTON & VERNICK ENGINEERS CRAIG F. REMINGTON	23924
11-2013	REMINGTON & VERNICK ENGINEERS CRAIG F. REMINGTON	23924
12-2013	REMINGTON & VERNICK ENGINEERS CRAIG F. REMINGTON	23924



NEW JERSEY DEPARTMENT OF THE TREASURY
DIVISION OF TAXATION
LOCAL PROPERTY TAX MAP
APPROVED AS A TAX MAP PURSUANT TO THE
PROVISIONS OF CHAPTER 175, LAWS OF 1913, ETC.
FOR THE DIRECTOR, DIVISION OF TAXATION
[Signature] P.E. & L.S.
12/1/54 CHIEF ENGINEERING SECTION
DATE 11/1/84 SERIAL NO. 769

STATE TAX DEPARTMENT
Approved as a Tax Map According to the
Provisions of Chapter 175, Laws of 1913.
J. H. THAYER MARTIN
State Tax Commissioner
By *[Signature]* Chief Engineer
Date NOV. 22, 1940, Serial No. 87.

TAX MAP
LAKEWOOD TOWNSHIP
OCEAN COUNTY, N. J.
SCALE: 1"=100' 1939
GEORGE B. WADDILL
LICENSED ENGINEER & SURVEYOR
LAKEWOOD, N. J.
REVISED 12/1/54 Bruce M. Larrabee
7/73 Daniel A. DeSesso
8/78

11/1/84 Rev. for Revaluation
3-85-UPDATE E. HARRY W. MAGER, JR. L.S.
7-85-PLS. FOR REVALUATION-HARRY W. MAGER, JR. L.S.