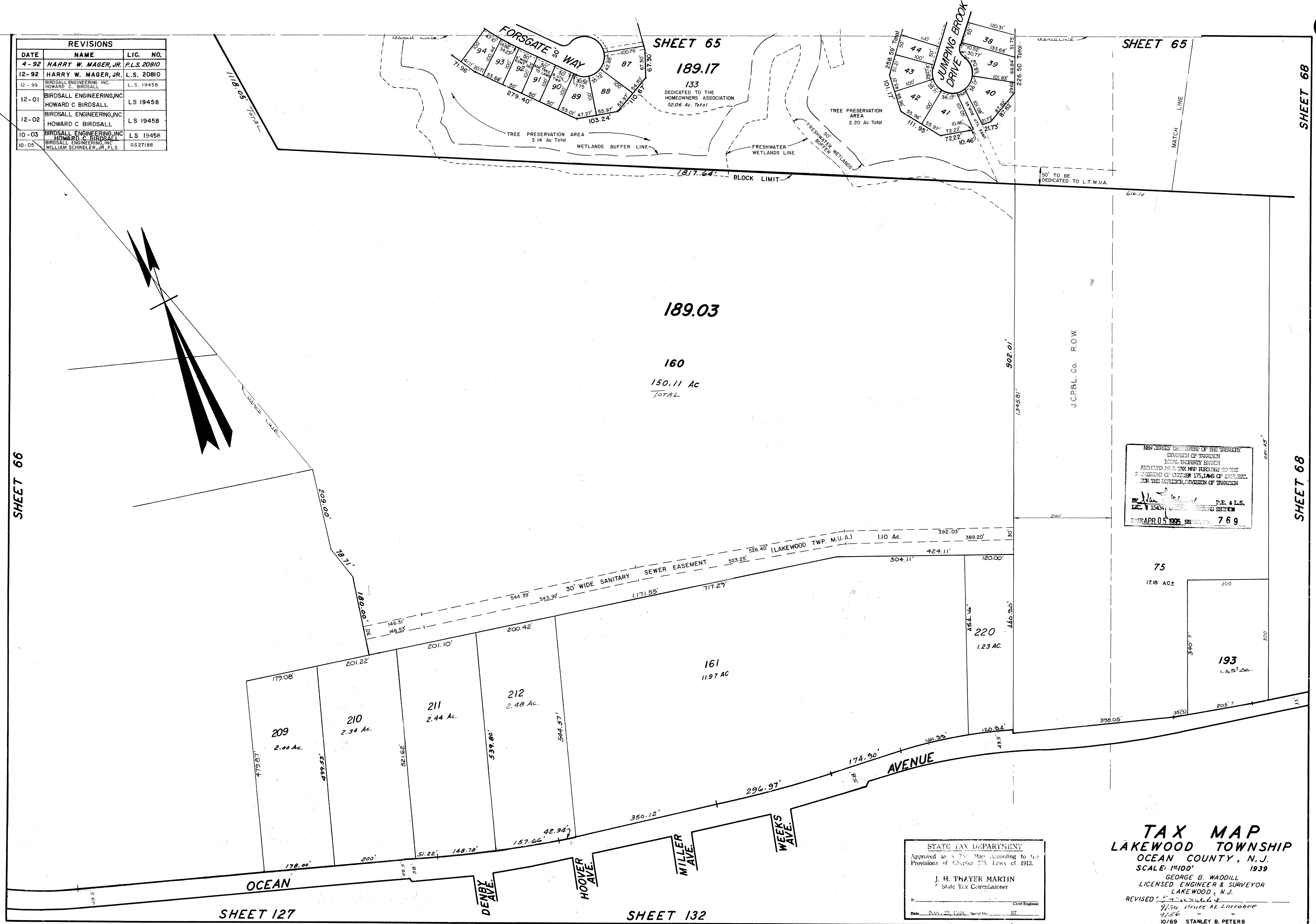


REVISIONS			
DATE	NAME	LIC.	NO.
4-92	HARRY W. MAGER, JR.	P.L.S.	20810
12-92	HARRY W. MAGER, JR.	L.S.	20810
12-99	BIRDSALL ENGINEERING, INC. HOWARD C. BIRDSALL	L.S.	19458
12-01	BIRDSALL ENGINEERING, INC. HOWARD C. BIRDSALL	L.S.	19458
12-02	BIRDSALL ENGINEERING, INC. HOWARD C. BIRDSALL	L.S.	19458
10-03	BIRDSALL ENGINEERING, INC. HOWARD C. BIRDSALL	L.S.	19458
10-05	BIRDSALL ENGINEERING, INC. WILLIAM SCHINDLER, JR., PLS	GS	27188



NEW JERSEY DEPARTMENT OF THE TREASURY
DIVISION OF TAXATION
LOCAL PROPERTY TAX
APPROVED AS A TAX MAP PURSUANT TO THE
PROVISIONS OF CHAPTER 175, LAWS OF 1939, ETC.
FOR THE DISTRICT, DIVISION OF TAXATION
BY *[Signature]* P.E. & L.S.
DATE APR 05 1995, SERIES NO. 769

STATE TAX DEPARTMENT
Approved as a Tax Map According to the
Provisions of Chapter 175, Laws of 1939.
J. H. THAYER MARTIN
State Tax Commissioner
By *[Signature]* Chief Engineer
Date Nov. 23, 1990, Serial No. 87

TAX MAP
LAKEWOOD TOWNSHIP
OCEAN COUNTY, N.J.
SCALE: 1"=100' 1939
GEORGE B. WADDILL
LICENSED ENGINEER & SURVEYOR
LAKEWOOD, N.J.
REVISED: *[Signature]*
7/54 Bruce M. Larabee
9/56 " "
10/69 STANLEY B. PETERS
3/71 FRANCIS D. HAVENS
8/73 Daniel A. DeSessa
5-80
1-84

6-85 UPDATE - HARRY W. MAGER, JR., L.S.
5-1-84 Rev. for Revaluation - Daniel A. DeSessa, P.E. L.S.
6-85 Rev. for Revaluation - HARRY W. MAGER, JR., L.S.
5-85 " "
10-86 " "
1-88 UPDATE - HARRY W. MAGER, JR., L.S.