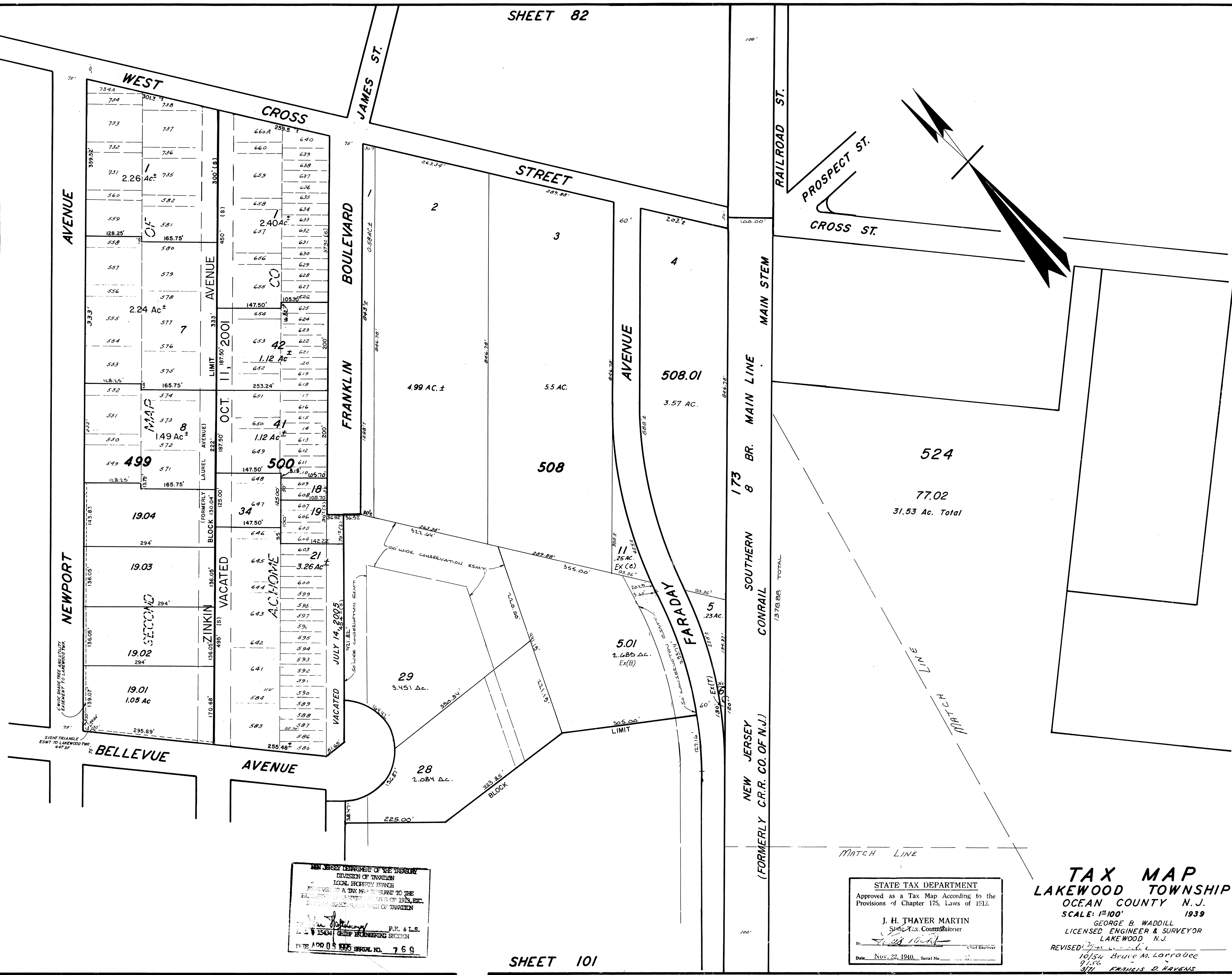


REVISIONS		
DATE	NAME	LIC. NO.
4-92	HARRY W. MAGER, JR.	P.L.S. 20810
12-92	HARRY W. MAGER, JR.	L.S. 20810
7-94	HARRY W. MAGER, JR.	P.L.S. 20810
7-98	HARRY W. MAGER, JR.	L.S. 20810
11-98	HARRY W. MAGER, JR.	L.S. 20810
12-99	BIRDSALL ENGINEERING INC HOWARD C. BIRDSALL	L.S. 19458
3-01	BIRDSALL ENGINEERING INC HOWARD C. BIRDSALL	L.S. 19458
11-02	BIRDSALL ENGINEERING INC HOWARD C. BIRDSALL	L.S. 19458
12-03	BIRDSALL ENGINEERING INC HOWARD C. BIRDSALL	L.S. 19458
8-04	BIRDSALL ENGINEERING INC WILLIAM SCHINDLER, JR., PLS	GS27188
10-05	BIRDSALL ENGINEERING INC WILLIAM SCHINDLER, JR., PLS	GS27188
12-07	BIRDSALL ENGINEERING INC HOWARD C. BIRDSALL, PLS	GS19458
2-08	BIRDSALL ENGINEERING INC HOWARD C. BIRDSALL, PLS	GS19458
4-2010	REMINGTON & VERNICK ENGINEERS CRAIG F. REMINGTON	23924
6-2012	REMINGTON & VERNICK ENGINEERS CRAIG F. REMINGTON	23924

SHEET 103



NEW JERSEY DEPARTMENT OF THE TREASURY  
DIVISION OF TAXATION  
LOCAL PROPERTY TAX  
APPROVED AS A TAX MAP SUBMITTAL TO THE  
REVENUE DEPARTMENT OF 1939, ETC.  
BY *[Signature]* P.E. & L.S.  
15434 CHIEF ENGINEERING SECTION  
FILED 100 05 1939 SERIAL NO. 769

STATE TAX DEPARTMENT  
Approved as a Tax Map According to the  
Provisions of Chapter 175, Laws of 1913.  
J. H. THAYER MARTIN  
State Tax Commissioner  
By *[Signature]* CHIEF ENGINEER  
Date Nov. 23, 1940 Serial No. 11

TAX MAP  
LAKEWOOD TOWNSHIP  
OCEAN COUNTY N.J.  
SCALE: 1"=100'  
1939  
GEORGE B. WADDILL  
LICENSED ENGINEER & SURVEYOR  
LAKEWOOD, N.J.  
REVISED 10/54 Bruce M. Larabee  
9/56  
9/71 FRANCIS D. HAVENS

Rev. for Revaluation 8-1-84  
2-85 Update  
12-87 UPDATE - HARRY W. MAGER, JR. - L.S.  
11-88 UPDATE - HARRY W. MAGER, JR. - L.S.