

## NJDEP GeoWeb Guide to Search Wetlands

Open the following webpage: <http://www.nj.gov/dep/gis/geowebsplash.htm>

Click “Launch GeoWeb Profile”



STATE OF NEW JERSEY  
DEPARTMENT OF ENVIRONMENTAL PROTECTION  
**BUREAU OF GIS**



Governor Chris Christie • Lt. Governor Kim Guadagno  
[NJ Home](#) | [Services A to Z](#) | [Departments/Agencies](#) | [FAQs](#)  
Search

**NJ-GeoWeb**   Home   Profiles   Tutorial   Training   Disclaimer   Contact Us

**Profiles:**  
[GeoWeb](#)  
[AWM](#)  
[Barnegat Bay](#)  
[Bear](#)  
[Geology](#)  
[Historic Preservation](#)  
[SAGE](#)  
[SDW](#)  
[SRP](#)  
[Tidelands](#)  
[Water Allocation](#)  
[Well Drillers](#)

**Need Help?**

Welcome to NJDEP’s new release of its popular interactive web mapping application ...

### NJ-GeoWeb

Users of this application can locate areas of interest, view and interact with NJDEP’s GIS data, and query related environmental information. NJ-GeoWeb presents users with a suite of customized [profiles](#) to choose from, where users can work within a more tailored application that includes specific datasets, tools, searches, and reports developed to address the interests of the general public, targeted groups of users, and the regulated community.

Included in this [latest release](#) are an entirely new user interface, several new profiles, and an assortment of new tool enhancements. These improvements promise to make this release an even more widely used tool, granting users access to more data and functionality, enabling them to gain better understanding of environmental issues in their areas of interest.



 [View the NJ-GeoWeb Overview Presentation](#)   
 [View the NJ-GeoWeb Interface Demo](#) 

Viewing the Interface Demo requires Adobe Flash Player.

The NJ-GeoWeb application currently runs best in **Internet Explorer (in Compatibility View)**. Users of NJ-GeoWeb may find that **Google Chrome** and **Apple Safari** also perform well however, NJ-GeoWeb does not currently work in **Firefox**.

Contact DEP | [Privacy Notice](#) | [Legal Statement & Disclaimers](#) | [Accessibility Statement](#) 

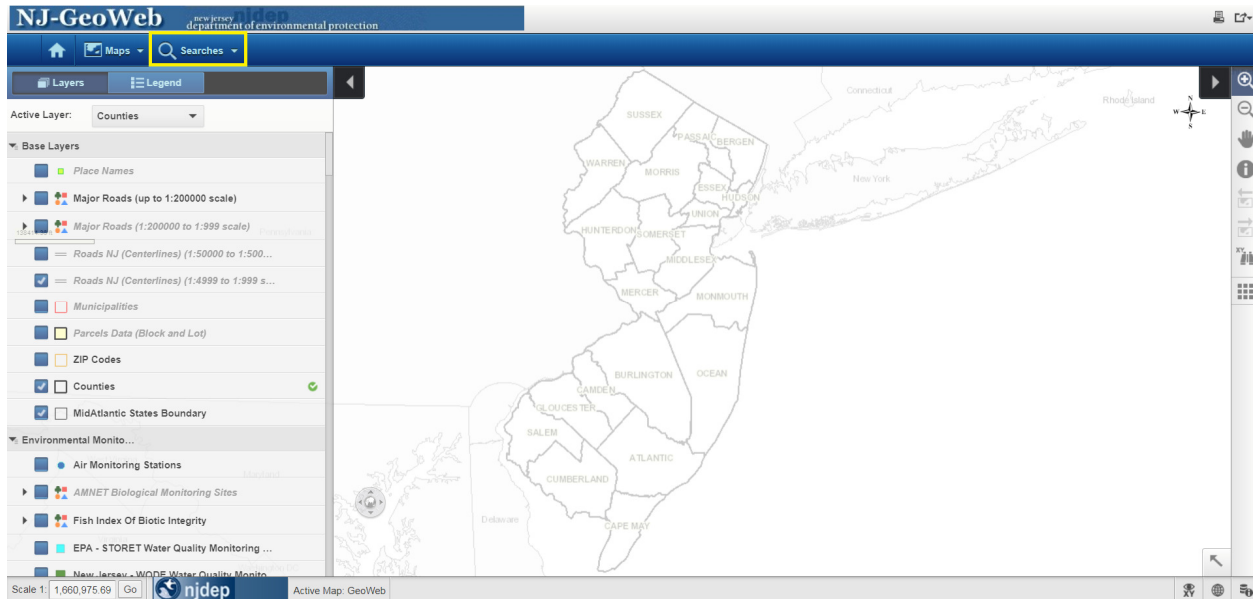
bureau: [bgis home](#) | [about bgis](#) | [contact bgis](#) | [interactive mapping](#) | [downloads](#) | [standards](#) | [GPS](#) | [resources](#) | [training](#) | [FAQs](#)  
department: [DEPNet](#) | [njdep home](#) | [about dep](#) | [index by topic](#) | [programs/units](#) | [dep online](#)  
statewide: [nj home](#) | [services A to Z](#) | [departments/agencies](#) | [FAQs](#)



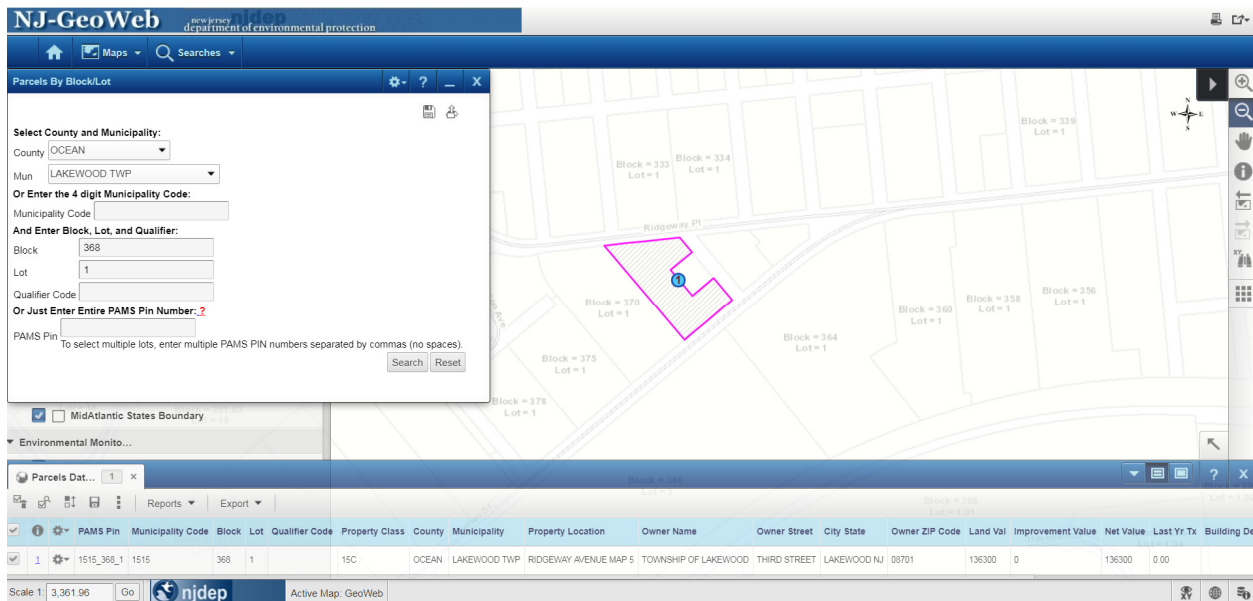
Copyright © State of New Jersey, 1996-2015  
Last Updated: April 6, 2015

## NJDEP GeoWeb Guide to Search Wetlands

Click “Searches”



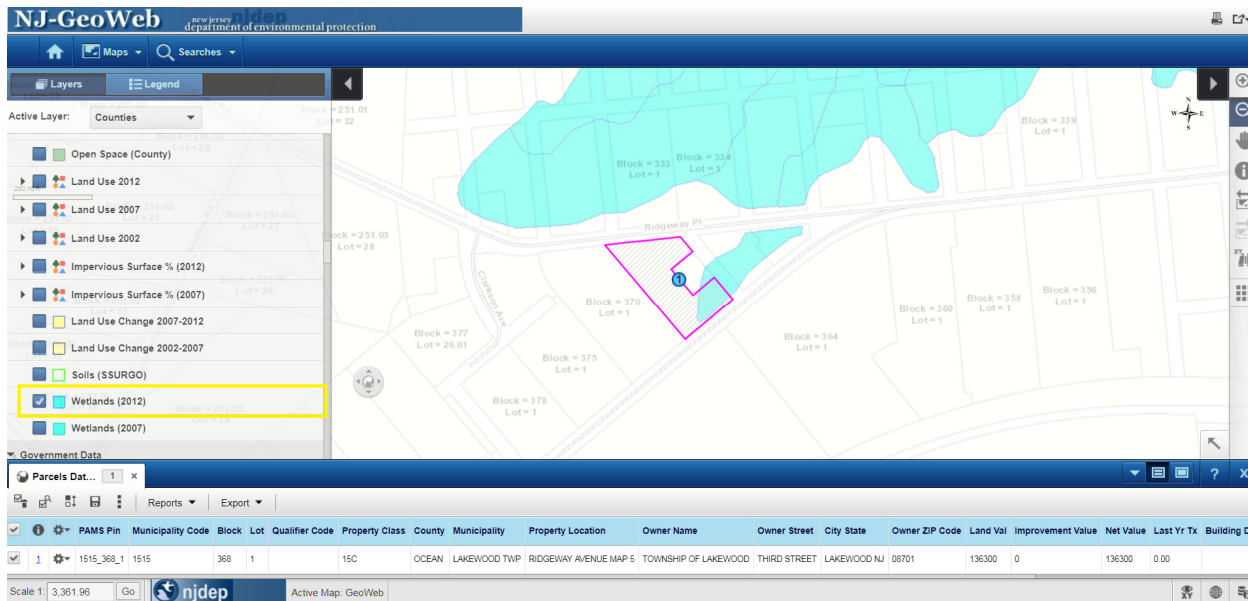
There are multiple ways to search. In this example we will search a parcel by block and lot.



## NJDEP GeoWeb Guide to Search Wetlands

Under “Base Layers” scroll down and select “Wetlands (2012)”

The shaded blue areas indicate possible wetlands.\*



\*The New Jersey freshwater wetlands maps provide guidance on where wetlands are found in New Jersey, but they are not the final word. Only an official determination from DEP, called a "letter of interpretation" can tell you for sure if you have freshwater wetlands on your property. An LOI verifies the presence, absence, or boundaries of freshwater wetlands and transition areas on a site. To get a letter of interpretation (or "LOI") from the DEP, call (609) 777-0454 and ask for the LOI information and application package. You can also go to the Freshwater Wetlands section of the Forms web page and choose the items you want to download. LOIs range from simple to complex, with a corresponding range of fees and application review times.

For more information visit:

[http://www.nj.gov/dep/landuse/fww/fww\\_main.html](http://www.nj.gov/dep/landuse/fww/fww_main.html)