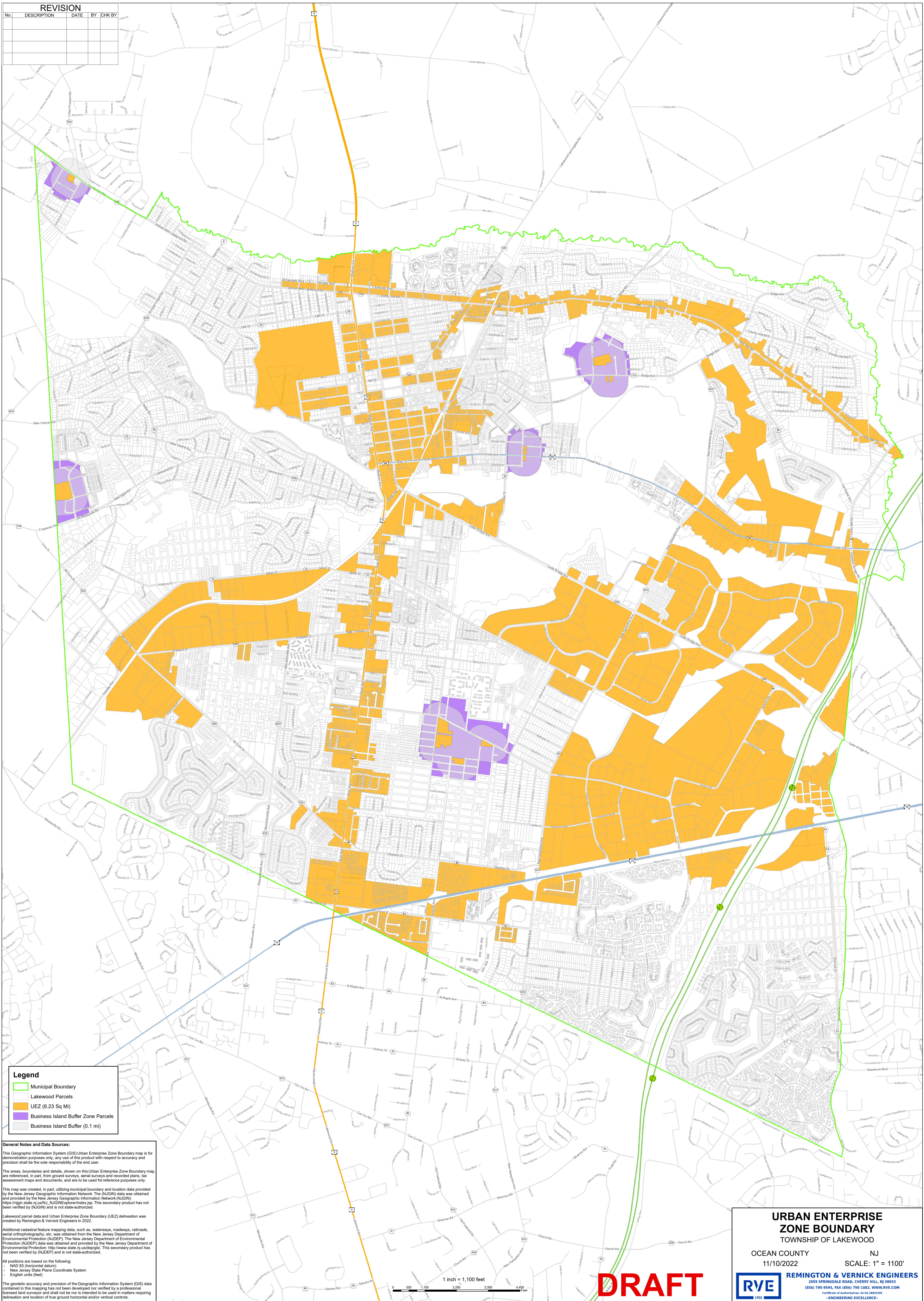


REVISION				
No.	DESCRIPTION	DATE	BY	CHK BY



Legend	
	Municipal Boundary
	Lakewood Parcels
	UEZ (6.23 Sq Mi)
	Business Island Buffer Zone Parcels
	Business Island Buffer (0.1 mi)

**General Notes and Data Sources:**

This Geographic Information System (GIS) Urban Enterprise Zone Boundary map is for demonstration purposes only, any use of this product with respect to accuracy and precision shall be the sole responsibility of the end user.

The areas, boundaries and details shown on this Urban Enterprise Zone Boundary map are referenced, in part, from ground surveys, aerial surveys and recorded plans, tax assessment maps and documents, and are to be used for reference purposes only.

This map was created, in part, utilizing municipal boundary and location data provided by the New Jersey Geographic Information Network (NJGIN). The NJGIN data was obtained and provided by the New Jersey Department of Environmental Protection (NJDEP). [https://njgin.state.nj.us/NJ\\_NJGINexplorer/index.jsp](https://njgin.state.nj.us/NJ_NJGINexplorer/index.jsp). This secondary product has not been verified by (NJGIN) and is not state-authorized.

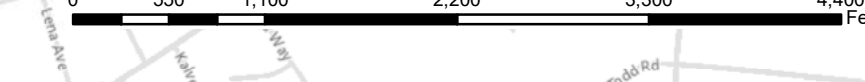
Lakewood parcel data and Urban Enterprise Zone Boundary (UEZ) delineation was created by Remington & Vernick Engineers in 2022.

Additional cadastral feature mapping data, such as, waterways, roadways, railroads, aerial orthophotography, etc. was obtained from the New Jersey Department of Environmental Protection (NJDEP). The New Jersey Department of Environmental Protection (NJDEP) data was obtained and provided by the New Jersey Department of Environmental Protection. <http://www.state.nj.us/dep/>. This secondary product has not been verified by (NJDEP) and is not state-authorized.

All positions are based on the following:  
 - NAD 83 (horizontal datum)  
 - New Jersey State Plane Coordinate System  
 - English units (feet)

The geodetic accuracy and precision of the Geographic Information System (GIS) data contained in this mapping has not been developed nor verified by a professional licensed land surveyor and shall not be nor is intended to be used in matters requiring delineation and location of true ground horizontal and/or vertical controls.

1 inch = 1,100 feet



**DRAFT**

**URBAN ENTERPRISE  
 ZONE BOUNDARY**  
 TOWNSHIP OF LAKEWOOD

OCEAN COUNTY NJ  
 11/10/2022 SCALE: 1" = 1100'

**REMINGTON & VERNICK ENGINEERS**  
 2059 SPRINGDALE ROAD, CHERRY HILL, NJ 08033  
 (856) 795-9595, FAX (856) 795-1882, WWW.RVE.COM  
 LICENSED PROFESSIONAL ENGINEERS IN THE STATE OF NEW JERSEY  
 -ENGINEERING EXCELLENCE-