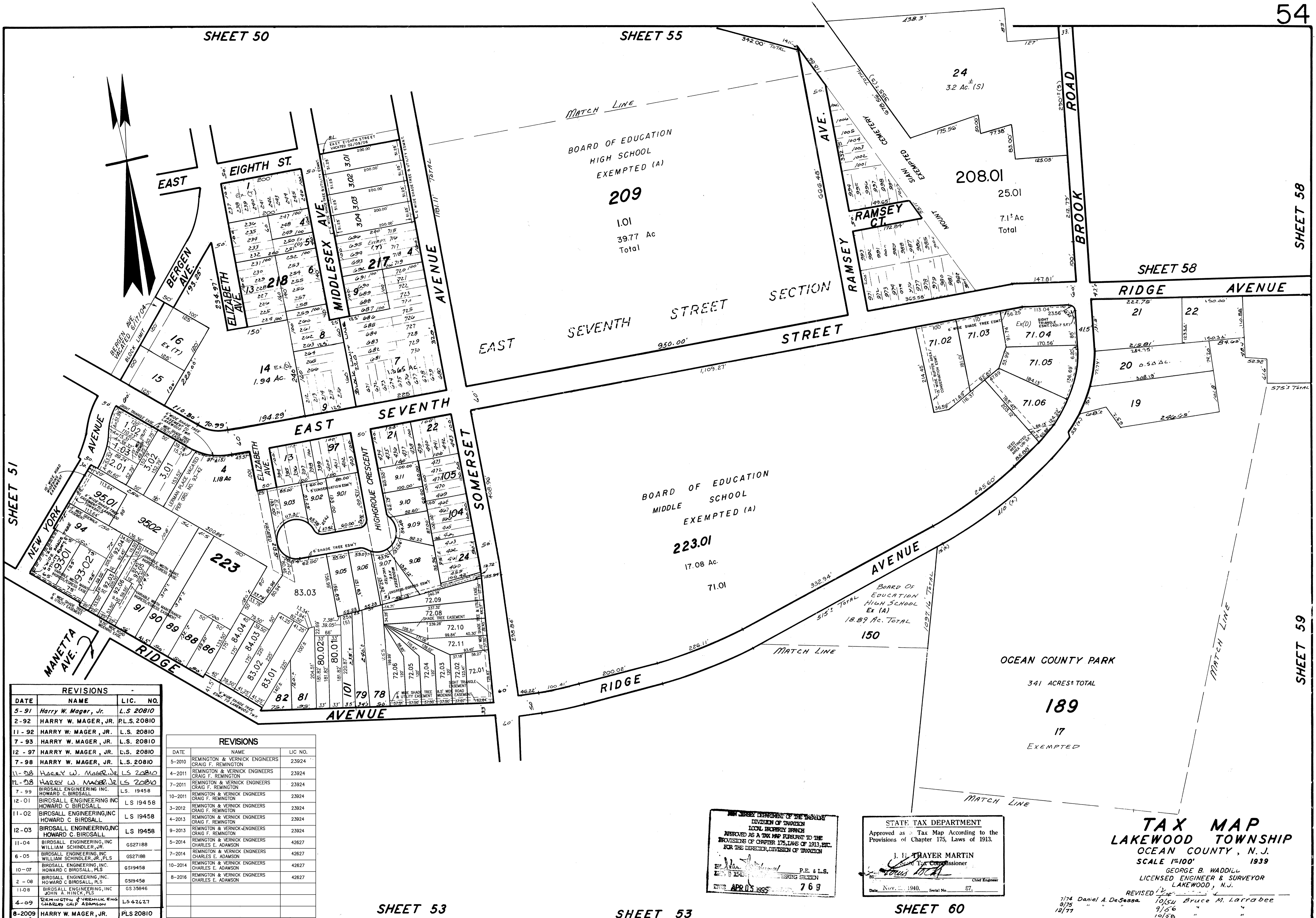


SHEET 50

SHEET 55



DATE	NAME	LIC. NO.
5-91	Harry W. Mager, Jr.	L.S. 20810
2-92	HARRY W. MAGER, JR.	PLS. 20810
11-92	HARRY W. MAGER, JR.	L.S. 20810
7-93	HARRY W. MAGER, JR.	L.S. 20810
12-97	HARRY W. MAGER, JR.	L.S. 20810
7-98	HARRY W. MAGER, JR.	L.S. 20810
11-98	HARRY W. MAGER, JR.	L.S. 20810
12-98	HARRY W. MAGER, JR.	L.S. 20810
7-99	BIRDSALL ENGINEERING INC. HOWARD C. BIRDSALL	L.S. 19458
12-01	BIRDSALL ENGINEERING INC. HOWARD C. BIRDSALL	L.S. 19458
11-02	BIRDSALL ENGINEERING INC. HOWARD C. BIRDSALL	L.S. 19458
12-03	BIRDSALL ENGINEERING INC. HOWARD C. BIRDSALL	L.S. 19458
11-04	BIRDSALL ENGINEERING, INC. WILLIAM SCHINDLER, JR., PLS	GS27188
6-05	BIRDSALL ENGINEERING, INC. WILLIAM SCHINDLER, JR., PLS	GS27188
10-07	BIRDSALL ENGINEERING INC. HOWARD C. BIRDSALL, PLS	GS19458
2-08	BIRDSALL ENGINEERING, INC. HOWARD C. BIRDSALL, PLS	GS19458
11-08	BIRDSALL ENGINEERING, INC. JOHN A. SCHINDLER, PLS	GS 35846
4-09	REMINGTON & VERNICK ENG. CHARLES E. ADAMSON	LS 42627
8-2009	HARRY W. MAGER, JR.	PLS 20810

DATE	NAME	LIC. NO.
5-2010	REMINGTON & VERNICK ENGINEERS CRAIG F. REMINGTON	23924
4-2011	REMINGTON & VERNICK ENGINEERS CRAIG F. REMINGTON	23924
7-2011	REMINGTON & VERNICK ENGINEERS CRAIG F. REMINGTON	23924
10-2011	REMINGTON & VERNICK ENGINEERS CRAIG F. REMINGTON	23924
3-2012	REMINGTON & VERNICK ENGINEERS CRAIG F. REMINGTON	23924
4-2013	REMINGTON & VERNICK ENGINEERS CRAIG F. REMINGTON	23924
9-2013	REMINGTON & VERNICK ENGINEERS CRAIG F. REMINGTON	23924
5-2014	REMINGTON & VERNICK ENGINEERS CHARLES E. ADAMSON	42627
7-2014	REMINGTON & VERNICK ENGINEERS CHARLES E. ADAMSON	42627
10-2014	REMINGTON & VERNICK ENGINEERS CHARLES E. ADAMSON	42627
8-2016	REMINGTON & VERNICK ENGINEERS CHARLES E. ADAMSON	42627

SHEET 53

SHEET 53

SHEET 60

APPROVED AS A TAX MAP PURSUANT TO THE PROVISIONS OF CHAPTER 175, LAWS OF 1913, ETC. FOR THE DIRECTOR, DIVISION OF TAXATION

J. H. TRAYER MARTIN
State Tax Commissioner

APR 05 1995

STATE TAX DEPARTMENT
Approved as a Tax Map According to the Provisions of Chapter 175, Laws of 1913.

J. H. TRAYER MARTIN
State Tax Commissioner

Date: Nov. 1940. Serial No. 87.

TAX MAP
LAKEWOOD TOWNSHIP
OCEAN COUNTY, N.J.
SCALE 1"=100'
1939

GEORGE B. WADDILL
LICENSED ENGINEER & SURVEYOR
LAKEWOOD, N.J.

REVISIONS

7/74	Daniel A. DeSessa	10/54	Bruce M. Larrabee
8/75	"	9/06	"
12/77	"	10/58	"
14/59	"	12/67	Robert B. Powers
3/68	"	3/71	D. D. Havens
5/73	Daniel A. DeSessa	5/73	Daniel A. DeSessa

5-1-84 Rev. for Revaluation ~ Daniel A. DeSessa P.E. L.S.
10-85 Update
8-88 UPDATE ~ HARRY W. MAGER, JR. L.S.
UPDATE - HARRY W. MAGER, JR. L.S.